



Spring birding trip to
Xuanzhong Monastery,
Jiaocheng, Taiyuan, Shanxi
China

13-16 March 2012

Paul HOLT & Qingyu WANG

piholt@hotmail.com

wangqingyu@yahoo.com.cn

INTRODUCTION

Brown Eared Pheasant is one of China's most threatened endemic pheasants. Classified as *Vulnerable* by BirdLife it has a population of between 5000-17000 (BirdLife International (2001) *Threatened birds of Asia: the BirdLife International Red Data Book*. Cambridge, UK: BirdLife International) and is restricted to northern China, where it is found at a modest number of scattered localities in the Luliang mountains (Luliang Shan) of western Shanxi and the mountains of north-western Hebei, western Beijing and central Shaanxi.

I'd previously seen Brown Eared Pheasant at Panquangou National Park, Shanxi in the early 1990s and in western Beijing about a decade ago and was keen to see it again. When some Chinese birders found and publicised a new and easily accessible site near Xuanzhong Temple close to Jiaocheng town about a 1.5 hour drive from Taiyuan I was eager to go. Qingyu didn't take much persuading and this short report details our brief trip.

The Brown Eared Pheasants at Xuanzhong Si are very reliable and very easy to see – they are undoubtedly much easier here than anywhere else - this is no doubt due to that fact that they're fed by the monks and have become habituated! Qingyu even managed to have a pair of pheasants feeding from her hand!

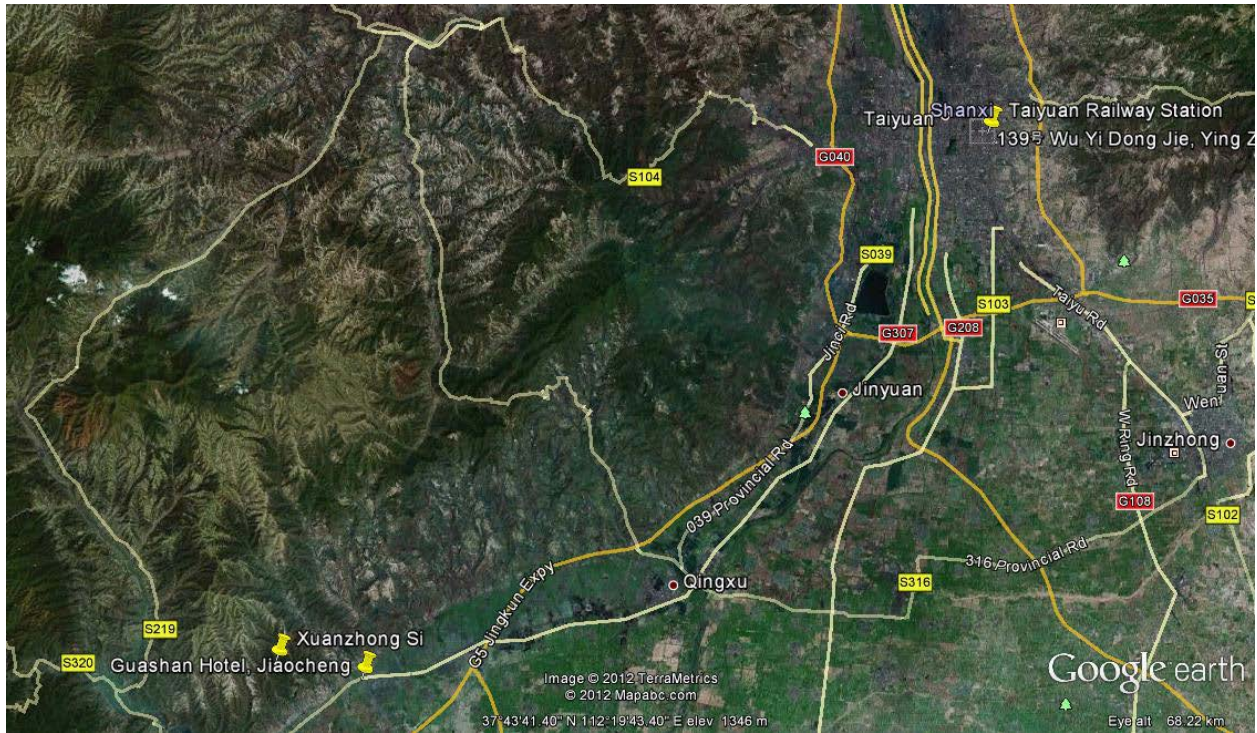


According to the local monks Brown Eared Pheasants can be seen at Xuanzhong Si throughout the year though they are difficult and usually absent from the area immediately around the temple at the height of the breeding season (mid-May to late June). Birds typically reappear at the end of June with adults often then being accompanied by tiny chicks! Winter is the best time to see larger numbers of pheasants with up to 23 birds being seen there during the winter of 2011-2012.

The Brown Eared Pheasants are so easy that it would be almost possible to day trip them from Beijing by taking the first train out from the Capital (this currently departs Beijing at 07h21 and arrives in Taiyuan at 11h10). This should get you to Xuanzhong Si no later than 13h00 and when we were there the birds performed best from 15h30-16h00. Unfortunately however currently the last train from Taiyuan back to Beijing leaves at 16h34 – a little too early to be absolutely sure of seeing the birds & you'd have to return to Beijing the following morning.

Note that we had booked our train tickets a few days in advance and that while the train we took from Beijing to Taiyuan wasn't completely full the one we took back on the 16th March appeared to be.

Note also that it is also possible to fly from Beijing to Taiyuan and that there are six or seven flights/day with prices ranging from 330 to 710 yuan (approximately \$60 to \$125 US).



ACKNOWLEDGEMENTS

Terry Townshend and Zhang Lin were kind enough to both provide some logistical information in advance of our trip.

DAILY DIARY

Tuesday 13 March 2012. Train from Beijing to Taiyuan, drove to Jiaocheng. Pm Xuanzhong Si.

We left Tongzhou at 06h05 & took a taxi to Beijing Xi Zhan (Beijing West Railway Station) where we arrived about 40 minutes later. Qingyu had already bought our train tickets.

Our express train (D2005) left on time at 08h54 and was scheduled to arrive in Taiyuan, capital of Shanxi Province, almost four hours later at 12h46. First class tickets cost 180 yuan, second class tickets 149 yuan and the train was remarkably punctual!

Morning train times are as follows –

Beijing	07h21	08h10	08h54	12h03
Taiyuan	11h10	11h55	12h46	15h47

Return train times –

Taiyuan	08h42	11h30	12h17	13h18	16h34
Beijing	12h20	15h11	16h00	17h02	20h30

It was a fast express train – with the speed peaking at 187 kilometres/hour for much of the journey. It also only made a very small number of stops – at Baoding (10h10), Dongzhou (10h28) and Shijiazhuang (10h15) in Hebei and Yanquan Bei Zhan (12h02) in Shanxi.

Shortly after leaving Shijiazhuang, the capital of Hebei Province, the railway line enters the Luliang Mountains (Luliang Shan) and a series of lengthy tunnels totalling 27.8 kilometres (the longest complex of rail tunnels anywhere in China) have been built for this apparently new rail line.

Arriving in Taiyuan at 12h46 we took a taxi from the railway station to Jiaocheng town (150 yuan & about 1 hour 15 minutes).

We left Taiyuan at 13h15 & had intended to have taken the expressway west to Jiaocheng – but there had been an accident and the expressway was closed. This delayed us slightly and the expected drive ended up taking a bit longer - 1.5 hours.

Once in Jiaocheng we checked in at the two star Guashan Hotel (North of Yingbin Road, Jiaocheng, Lvliang, Shanxi, 030500 – tel: 0358 3551999, manager's mobile phone 15135497699, fax: 0358 3537700 & email: gsbg0358@163.com).

Our room was clean and fairly comfortable though the bed was extremely hard. There was 24 hours hot water, a TV, kettle and en suite bathroom with western toilet, wash basin & a shower. The hotel's restaurant was only OK – no better than that. The hotel was also about one kilometre up Yingbin road from Jiaocheng bus station and the town's main supermarket was about 100 metres from the latter.

Leaving the hotel at 15h15 we took a local taxi to Xuanzhong Si where we arrived just 20 minutes later at 15h35. We kept the taxi for the rest of the afternoon at a cost of 100 yuan.

Taiyuan railway station. (37°51.7'N, 112°34.6'E). 755 metres.

Guashan Hotel, Jiaocheng. (37°33.2'N, 112°08.3'E). 775 metres.

Xuanzhong Monastery (Xuanzhong Si), Jiaocheng. (37°33.8'N, 112°04.7'E). 1060 metres.

This site is 55 kilometres southwest of Taiyuan railway station & 5.4 kilometres west of the Guashan hotel in Jiaocheng.

We'd been warned ahead of our visit (by both Terry Townshend & Zhang Lin) that it would be cold at Xuanzhong Si – but we think that we were lucky and temperatures never actually dropped below freezing! There was a lot of ice in the stream bottoms near the temple and clearly the winters here are indeed very hard. Fortunately for us there was hardly any wind throughout our visit and, while the sun rarely ventured in to the valley bottom where the temple is located, day time temperatures climbed to 13°C during our second afternoon!

Xuanzhong Temple is a locally well-known site. Located near the head of a valley at the end of a road it is about a ten kilometre drive from Jiaocheng town – four kilometres of which are up a side road that ends in the car park 200-300 metres before the temple complex. This 20 x 30 metre car park has a several small tourist stalls along one side – these sell typical temple tourist items such as prayer wheels and Buddhist statues, drinks as well as snacks such as noodles and simple biscuits as well as more unusual items such as several stuffed and mounted Common Pheasants!

Tourist vehicles are not allowed to go beyond this car park but others serving the temple can venture on another 200-300 metres. We parked up in the car park and walked up the now steeper paved road towards the temple. One the second hairpin there's a small level track off to the left immediately before the first building on that side. There's a fairly deep gully on the left here and the track leads along the edge of it and past a small toilet block to a tiny (3 metre square pumping station) after about 60 metres. This is where we saw the Brown Eared Pheasants with a pair being present both of the afternoons we were there. They could be heard calling in the juniper clad hillside on the far side of the gully during the day but rarely showed themselves until the late afternoon (between 15h30 and 16h00) when they appeared and came down to near the toilet block. As is so often the case near similar temples in China the pheasants were extremely tame and clearly used to people. Other people have also seen the pheasants in the morning but one of the monks told us that several of them (currently between two and four birds) came into the temple complex to be fed most mornings at around 07h00. Unfortunately that part of the temple complex is out of bounds to tourists (and bird watchers!)

There were very few walkable tracks elsewhere around the temple – there was one that headed up to an abandoned watchtower that started to the right about 20 metres before the main gate in to the temple proper but this was fenced off with a prominent sign warning that tourists weren't allowed beyond. This barrier was easily circumvented however and headed, initially steeply, up the juniper clad hillside. We spent quite a bit of time on this trail and ventured perhaps about 1.5 kilometres up it before coming back the same way. The only other area that we explored was the approach road – and Paul walked about three kilometres back down here on the 15th March.

The entire area around Xuanzhong Si is very dry and fires are a real danger – this is probably why tourists aren't allowed on any of the steep valley side trails. An extremely loud recorded message is played in front of the temple every time that a new group of tourists arrive – telling them not to smoke and to stay on the road!



We met quite a few other Chinese birders at Xuanzhong Si today – Yang Xuedong & his non-birding colleague Mr Chen from Zhengzhou, Henan and a group of six other birders from mainland China, Taiwan and Hong Kong that included Bai Fan from Fujian, Cai Muchi from Taiwan & KC Lee from Hong Kong. The same two groups of birders all stayed at the Guashan Hotel and, like us, also returned to the monastery the following morning.

Sunrise & sunset in Taiyuan on 13 March 2012

Sun rise	06h44
Sun set	18h33

Weather

A display on the train gave the outside temperature as being between 11-15°C. It was 11°C when we left Taiyuan at 13h15.

Wednesday 14 March 2012. All day at Xuanzhong Si near Jiaocheng.

We left the Guashan hotel at 05h45 & headed back to Xuanzhong Si. Arriving there at 06h02 we spent the rest of the day there, leaving at 17h45.

Weather

+2°C at Xuanzhong Si at 06h25 with no cloud cover and no wind. The temperature had risen to 14°C there at 13h30.

Thursday 15 March 2012. Morning Xuanzhong Si near Jiaocheng.

Qingyu wasn't feeling too well so Paul ventured out alone today and arrived at the monastery car park at 06h05. He spent the first three hours of the day immediately above there before walking back down the approach road from 09h00. It started to rain in the late morning and Paul left the site shortly afterwards intending to return for the pheasant show in the late afternoon – but the rain only intensified and he didn't make it back!

Weather

2°C near Xuanzhong Monastery at 06h15 & 5°C there by 09h00. It was overcast most of the morning with rain threatening. The first drops were felt at about 11h00 and by 12h00 it was raining hard. This continued throughout the afternoon and at least in to the early evening.

Friday 16 March 2012. Early am Xuanzhong Si. Late morning returned to Taiyuan & pm train back to Beijing.

Paul left the Guashan hotel at 05h50 & drove back to Xuanzhong Monastery where he arrived just under 20 minutes later. He spent four hours there (06h08-10h10) before heading back to the hotel in Jiaocheng. Arriving just ten minutes later he picked Qingyu up & we then both headed back to Taiyuan. The drive back took 1 hour 25 minutes & we arrived at 11h50 – in plenty of time for our 13h18 train back to Beijing.

Weather

Cool 2°C near Xuanzhong Monastery at 06h15 but with clear skies and a light frost. The heavy rain of yesterday afternoon & evening stopped sometime during the night – but it was foggy in the valley bottom. The temperature slowly climbed to 8°C by the time I left the monastery site at 10h00.

BIRD LIST

Four figures are given in parentheses - the first two of these figures details how many days out of four that particular species was seen in Shanxi. The third figure notes the highest daily count and the fourth the number of bird-days. Hence the entry for Brown Eared Pheasant reads (4/4 5 17) - birds were noted on all four of the four days we were in Shanxi, with up to 5 individuals on any one date and with a total of 17 bird-days.

Names, order and taxonomy mostly follow the CBR [China Bird Report] Checklist of Birds of China v2.0 (2011) accessed on-line 15 Sept. 2011.

CHUKAR PARTRIDGE *Alectoris chukar* 石鸡

(1/4 1 1) (*ca.*1200 metres)

1 very distant bird was heard at Xuanzhong Si near Jiaocheng on the 16/3/2012. (*ca.*1200 metres)

BROWN EARED PHEASANT *Crossoptilon mantchuricum* VU 褐马鸡

(4/4 5 17) (960-*ca.*1150 metres)

4, two heard & two others seen, at Xuanzhong Si near Jiaocheng on the 13/3/2012. (1060-1080 metres)

4, two seen & two others only heard, at Xuanzhong Si near Jiaocheng on the 14/3/2012. The first bird was heard to call only minutes after we arrived at 06h02. (960-*ca.*1150 metres)

5 were heard at Xuanzhong Si near Jiaocheng on the 15/3/2012. The first bird was heard at 06h10 – just five minutes after I arrived. (1040-1100 metres)

4, a pair and two widely separate singles, were heard at Xuanzhong Si near Jiaocheng on the 16/3/2012. The first bird didn't call until 06h28 – quite a bit later than previous mornings but they all remained out of view with two birds on the regular hillside opposite the car park, another on the same hillside but back down the valley a way. The fourth bird was heard calling inside the temple compound. (980-*ca.*1100 metres)



COMMON PHEASANT *Phasianus colchicus* 雉鸡

(2/4 6 8) (900-*ca.*1100 metres)

2 at Xuanzhong Si near Jiaocheng on the 13/3/2012. (960 & 1050 metres)

6, two seen and four other only heard, at Xuanzhong Si near Jiaocheng on the 14/3/2012. (900-*ca.*1100 metres)

EURASIAN SPARROWHAWK *Accipiter nisus* 雀鹰

(2/4 1 2) (1080 & *ca.*1200 metres)

1 at Xuanzhong Si near Jiaocheng on the 14/3/2012. (1080 metres)

1 at Xuanzhong Si near Jiaocheng on the 15/3/2012. (*ca.*1200 metres)

NORTHERN LAPWING *Vanellus vanellus* 凤头麦鸡

1 from the train near Ding Zhou in eastern Hebei on the 13/3/2012. (120 metres)

EURASIAN COLLARED DOVE *Streptopelia decaocto* 灰斑鸠

2 were seen from the train in Shijiazhuang, eastern Hebei on the 13/3/2012. (125 metres)

SPOTTED DOVE *Spilopelia chinensis* 珠颈斑鸠

(4/4 5 13) (800-1100 metres)

1 was heard at Xuanzhong Si near Jiaocheng on the 13/3/2012. (1060 metres)

3 at Xuanzhong Si near Jiaocheng on the 14/3/2012. (1000, 1050 & 1100 metres)

5 at Xuanzhong Si near Jiaocheng on the 15/3/2012. (960 metres)

5 at Xuanzhong Si near Jiaocheng on the 16/3/2012. (800-1090 metres)

GREAT SPOTTED WOODPECKER *Dendrocopos major* 大斑啄木鸟

1 was seen from the train in Shijiazhuang, eastern Hebei on the 13/3/2012. (125 metres)

GREY-HEADED WOODPECKER *Picus canus* 灰头绿啄木鸟

(3/4 3 5) (980-ca.1100 metres)

1 was heard at Xuanzhong Si near Jiaocheng on the 14/3/2012. (ca.1100 metres)

3, a pair seen & another heard, at Xuanzhong Si near Jiaocheng on the 15/3/2012. (980, 995 & 1100 metres)

1 was heard at Xuanzhong Si near Jiaocheng on the 16/3/2012. (ca.1100 metres)

AZURE-WINGED MAGPIE *Cyanopica cyanus* 灰喜鹊

(1/4 3 3) (ca.850 metres)

3 at Xuanzhong Si near Jiaocheng on the 15/3/2012. (ca.850 metres)

RED-BILLED BLUE MAGPIE *Urocissa erythrorhyncha* 红嘴蓝鹊

(4/4 8 24) (920-1080 metres)

8 at Xuanzhong Si near Jiaocheng on the 13/3/2012. (1020-1080 metres)

6 at Xuanzhong Si near Jiaocheng on the 14/3/2012. (960 metres)

6 at Xuanzhong Si near Jiaocheng on the 15/3/2012. (920-970 metres)

4 at Xuanzhong Si near Jiaocheng on the 16/3/2012. (960 metres)

SPOTTED NUTCRACKER *Nucifraga caryocatactes* 星鸦

(4/4 4 14) (995-ca.1200 metres)

2 at Xuanzhong Si near Jiaocheng on the 13/3/2012. (1060-1100 metres)

4 at Xuanzhong Si near Jiaocheng on the 14/3/2012. The first bird was heard calling at 06h25. (1080-1100 metres)

4 at Xuanzhong Si near Jiaocheng on the 15/3/2012. (995-ca.1200 metres)

4 at Xuanzhong Si near Jiaocheng on the 16/3/2012. (1060-ca.1100 metres)

[RED-BILLED CHOUGH *Pyrhocorax pyrrhocorax* 红嘴山鸦

1 bird, possibly this species, was heard at Xuanzhong Si near Jiaocheng on the 13/3/2012. (ca.1200 metres)]

CORVID SP.

(1/4 1 1) (ca.1200 metres)

1 at Xuanzhong Si near Jiaocheng on the 16/3/2012. (ca.1200 metres)

MARSH TIT *Poecile palustris* 沼泽山雀

(3/4 4 8) (950 & 1060 metres)

2, a pair, at Xuanzhong Si near Jiaocheng on the 14/3/2012. (1060 metres)

4 at Xuanzhong Si near Jiaocheng on the 15/3/2012. (950 & 1060 metres)

2, a pair, at Xuanzhong Si near Jiaocheng on the 16/3/2012. (1060 metres)

WILLOW TIT *Poecile montana* 褐头山雀

(3/4 4 9) (1025-1100 metres)

4 at Xuanzhong Si near Jiaocheng on the 14/3/2012. (1060-1100 metres)

3 at Xuanzhong Si near Jiaocheng on the 15/3/2012. (1025-1060 metres)

2, a pair, at Xuanzhong Si near Jiaocheng on the 16/3/2012. (1060 metres)

COAL TIT *Periparus ater* 煤山雀

(3/4 3 7) (1100 metres)

3 at Xuanzhong Si near Jiaocheng on the 14/3/2012. (1100 metres)

2 at Xuanzhong Si near Jiaocheng on the 15/3/2012. (1100 metres)

2, a pair, at Xuanzhong Si near Jiaocheng on the 16/3/2012. (1100 metres)

JAPANESE TIT *Parus minor* 远东山雀

(4/4 4 14) (920-1100 metres)

4 at Xuanzhong Si near Jiaocheng on the 13/3/2012. (1020-1060 metres)
4 at Xuanzhong Si near Jiaocheng on the 14/3/2012. (1020-1070 metres)
2 at Xuanzhong Si near Jiaocheng on the 15/3/2012. (1060-1100 metres)
4 at Xuanzhong Si near Jiaocheng on the 16/3/2012. (920-1090 metres)

SILVER-THROATED BUSHTIT *Aegithalos glaucogularis* 银喉长尾山

(3/4 20 38) (1025-1110 metres)

12 at Xuanzhong Si near Jiaocheng on the 14/3/2012. (1095-1110 metres)
20 at Xuanzhong Si near Jiaocheng on the 15/3/2012. (1025-1110 metres)
6 at Xuanzhong Si near Jiaocheng on the 16/3/2012. (1060 metres)

PLAIN LAUGHINGTHRUSH *Garrulax davidi* 山噪鹛

(4/4 8 21) (960-1100 metres)

4 at Xuanzhong Si near Jiaocheng on the 13/3/2012. (1060 metres)
8 at Xuanzhong Si near Jiaocheng on the 14/3/2012. (1040-1100 metres)
5 at Xuanzhong Si near Jiaocheng on the 15/3/2012. (960-1080 metres)
4 at Xuanzhong Si near Jiaocheng on the 16/3/2012. (1060 metres)



CHINESE HILL WARBLER *Rhopophilus pekinensis* 山鹛

(2/4 2 4) (920-1140 metres)

2 were heard at Xuanzhong Si near Jiaocheng on the 14/3/2012. (1140 metres)
2 at Xuanzhong Si near Jiaocheng on the 15/3/2012. (920 & 940 metres)

VINOUS-THROATED PARROTBILL *Sinosuthora webbiana* 棕头鸦雀

(3/4 30 37) (920-1060 metres)

1 was heard at Xuanzhong Si near Jiaocheng on the 13/3/2012. (1060 metres)

6 at Xuanzhong Si near Jiaocheng on the 14/3/2012. (1040 metres)
30 at Xuanzhong Si near Jiaocheng on the 15/3/2012. (920-1050 metres)

[GOLDCREST *Regulus regulus* 戴菊

1 bird, possibly this species, was heard briefly at Xuanzhong Si near Jiaocheng on the 14/3/2012. (1120 metres)]

EURASIAN WREN *Troglodytes troglodytes* 鹪鹩

(4/4 2 7) (1040-ca.1100 metres)

2 were heard at Xuanzhong Si near Jiaocheng on the 13/3/2012. (1040 & 1060 metres)

2 were heard at Xuanzhong Si near Jiaocheng on the 14/3/2012. (1060 metres)

1 was heard at Xuanzhong Si near Jiaocheng on the 15/3/2012. (1070 metres)

2 separate birds were heard at Xuanzhong Si near Jiaocheng on the 16/3/2012. One of these started singing at 06h20 and was the first Eurasian Wren I'd heard singing on this trip. (1060 & ca.1100 metres)

NAUMANN'S THRUSH *Turdus naumanni* 红尾鸫

(1/4 1 1) (1070 metres)

1 at Xuanzhong Si near Jiaocheng on the 15/3/2012. (1070 metres)

THRUSH SP.

(1/4 1 1) (1020 metres)

1 was heard at Xuanzhong Si near Jiaocheng on the 14/3/2012. (1020 metres)

PLUMBEOUS WATER REDSTART *Rhyacornis fuliginosa* 红尾水鸫

1 singing bird was heard besides the stream just below the car park at Xuanzhong Si near Jiaocheng on the 15/3/2012. (ca.1000 metres)

EURASIAN TREE SPARROW *Passer montanus* 麻雀

(4/4 30 80) (750-1100 metres)

10 between Jiaocheng & Xuanzhong Si on the 13/3/2012. (850-1070 metres)

30 at Xuanzhong Si near Jiaocheng on the 14/3/2012. (900-1100 metres)

20 at Xuanzhong Si near Jiaocheng on the 15/3/2012. (1060 metres)

20 at Xuanzhong Si near Jiaocheng on the 16/3/2012. (800-1070 metres)

SIBERIAN ACCENTOR *Prunella montanella* 棕眉山岩鹨

(2/4 2 3) (970 & 1080 metres)

2 were heard at Xuanzhong Si near Jiaocheng on the 14/3/2012. (1080 metres)

1 was heard at Xuanzhong Si near Jiaocheng on the 15/3/2012. (970 metres)

[OLIVE-BACKED PIPIT *Anthus hodgsoni* 树鹨

1 bird, possibly this species, was heard distantly at Xuanzhong Si near Jiaocheng on the 15/3/2012. (960 metres)]

BRAMBLING *Fringilla montifringilla* 燕雀

(2/4 2 4) (1060 & 1100 metres)

2 at Xuanzhong Si near Jiaocheng on the 15/3/2012. (1060 metres)

2 at Xuanzhong Si near Jiaocheng on the 16/3/2012. (1100 metres)

GREY-CAPPED GREENFINCH *Chloris sinica* 金翅雀

(4/4 10 21) (1050-1140 metres)

1 was heard at Xuanzhong Si near Jiaocheng on the 13/3/2012. (1060 metres)

4 at Xuanzhong Si near Jiaocheng on the 14/3/2012. (1060-1140 metres)

6 at Xuanzhong Si near Jiaocheng on the 15/3/2012. (1080 metres)

10 at Xuanzhong Si near Jiaocheng on the 16/3/2012. (1050-1100 metres)

LONG-TAILED ROSEFINCH *Uragus sibiricus lepidus* 长尾雀

(4/4 13 33) (920-1105 metres)

2 at Xuanzhong Si near Jiaocheng on the 13/3/2012. (1080 metres)

12 at Xuanzhong Si near Jiaocheng on the 14/3/2012. (920-1100 metres)

13 at Xuanzhong Si near Jiaocheng on the 15/3/2012. (1020-1105 metres)

6, three pairs, at Xuanzhong Si near Jiaocheng on the 16/3/2012. (1050-1070 metres)



[COMMON ROSEFINCH *Carpodacus erythrinus* 普通朱雀

The group of Chinese & Taiwanese birders reported seeing one on the approach road below Xuanzhong Si near Jiaocheng on the 14/3/2012]

CHINESE BEAUTIFUL ROSEFINCH *Carpodacus davidianus* 红眉朱雀

(2/4 3 5) (1020-1100 metres)

3 at Xuanzhong Si near Jiaocheng on the 14/3/2012. (1060-1100 metres)

2 at Xuanzhong Si near Jiaocheng on the 15/3/2012. (1020 & 1080 metres)

GODLEWSKI'S BUNTING *Emberiza godlewskii* 戈氏岩鹀

(3/4 4 7) (1020-1100 metres)

1 at Xuanzhong Si near Jiaocheng on the 14/3/2012. (1080-1100 metres)

4 at Xuanzhong Si near Jiaocheng on the 15/3/2012. (1020-1100 metres)

2 at Xuanzhong Si near Jiaocheng on the 16/3/2012. (1060 & 1100 metres)

MEADOW BUNTING *Emberiza cioides* 三道眉草鹀

(1/4 1 1) (960 metres)

1 was heard at Xuanzhong Si near Jiaocheng on the 15/3/2012. (960 metres)

[YELLOW-THROATED BUNTING *Emberiza elegans* 黄喉鹀

1 bunting, possibly this species, at Xuanzhong Si near Jiaocheng on the 16/3/2012. (1060 metres)]

MAMMALS, REPTILES & AMPHIBIANS

PERE DAVID'S ROCK SQUIRREL *Sciurotamias davidianus*

(3/4 4 8) (980-1080 metres)

2 at Xuanzhong Si near Jiaocheng on the 13/3/2012. (1060 metres)

4 at Xuanzhong Si near Jiaocheng on the 14/3/2012. (1060-1080 metres)

2 at Xuanzhong Si near Jiaocheng on the 15/3/2012. (980 & 1060 metres)

2 at Xuanzhong Si near Jiaocheng on the 16/3/2012. (1060 metres)

HARE SP.

(1/4 1 1) (850 metres)

1 besides the approach road below Xuanzhong Si near Jiaocheng before dawn on the 14/3/2012. (850 metres)

Paul Holt Beijing 17 March 2012