

Argentina

16 November – 10 December, 2001

Björn Anderson & Mathias Bergström

Iguazu, Buenos Aires, Chubut, Santa Cruz and Tierra del Fuego



This is a report from a birding trip to Argentina. Two of us spent a first week around Iguazu and then the other two of us joined in for a hectic two-week odyssey in the southern half of the country. Three of us had been birding fairly extensively in the Neotropics, but never before in the southern cone of the continent. Not surprisingly most of the focus was therefore to get as many of the southern specialities as possible.

Travelers: Mathias Bergström (MB), Sebbe Nilsson (SN), Björn Anderson (BA) and Stig-Uno Svensson (SUS), all of us from Sweden. For e-mail addresses, see below.

Summary of the journey

16/11 Departure from Stockholm in the evening
17/11 Arrival in Buenos Aires, flight to Puerto Iguazu, P. Iguazu riverside in the afternoon
18/11 Iguazu
19/11 Iguazu
20/11 Iguassu (Brazil)
21/11 Iguazu in the morning, bus to Buenos Aires in the afternoon
22/11 Buenos Aires, Costerana Sur
23/11 Buenos Aires, Costerana Sur
24/11 Buenos Aires-San Clemente, Punta Rasa
25/11 Punta Rasa, Atalaya
26/11 Atalaya, (Costerana Sur), Trelew
27/11 Punta Tombo, Valdes peninsula
28/11 Valdes peninsula, San Antonio Oeste
29/11 San Antonio Oeste
30/11 San Antonio Oeste, Trelew
1/12 Trelew, El Calafate, Los Glaciares N.P
2/12 Los Glaciares N.P, El Calafate, Estancia La Angostura
3/12 Strobel Plateau foothills, Rio Gallegos
4/12 Cabo Virgenes
5/12 Rio Gallegos, Tierra del Fuego
6/12 Tierra del Fuego
7/12 Tierra del Fuego
8/12 Tierra del Fuego
9/12 Buenos Aires, Costerana Sur
10/12 Stockholm

Car rental

The car rental produced our only hassle during the trip. For Buenos Aires and Ushuaia we had pre-booked a car from Hertz using their Internet site. In Buenos Aires we had no problems but in Ushuaia we were told that our reservation had been cancelled a few days earlier. I wonder by whom because we had not cancelled it! Probably it was a lame excuse from the local Hertz office. Instead we were lucky that Localiza had a suitable car for us. For Trelew we had pre-booked and prepaid a car from Holiday Autos through their Internet site. Holiday Autos has no cars but instead they use local companies. In this case it happens to be Localiza. When we tried to get this car, the Localiza agent told us that they no longer work with Holiday Autos! Our prepaid voucher was not valid anymore so if we wanted a car we had to pay for it. Since we were in a hurry and did not want to spend more time arguing, we had to settle with that and contact Holiday Autos when we got back to Sweden. Back in Sweden Holiday Autos did not have any good explanation about the problem but we got our money back.

Money

Before the devaluation of the Peso in January 2002, Argentina was a very expensive country to travel in. When we were there the Peso was connected to the USD 1:1 and prices were very high. We used both credit card and USD cash during our trip.

Literature

Argentina, Uruguay and Paraguay, Lonely Planet
Where to watch birds in South America, Nigel Wheatley
Birds of South America and Antarctica, Martin R. de la Peña and Maurice Rumboll
The plates from Birds of South America Volume I and II, Ridgely, Tudor

Patagonia Nov 25- Dec 18 2000, Ornifolks
Birding trip report Buenos Aires province Oct 2000, John van der Woude
Birdwatching in Argentina Sep-Oct 1993, Danish Ornithological Society
Argentina Nov 16 – Dec 1 1996, Greg D. and Debra D. Jackson
Chile and Argentina, 7 October – 26 November 2000, Jon Hornbuckle
Argentina November-December 1994, Jan Vermeulen

Guide

We highly recommend Santiago Imberti as a guide for southern Patagonia. His arrangement was excellent. Not only is he a fantastic birder but also a good cook. Santiago can be reached at imbertis@internet.siscotel.com or santiagoimberti@hotmail.com

For more information, don't hesitate to contact us.

Mathias Bergström at mathias.b@telia.com
Björn Anderson at bjorn.Anderson@privat.utfors.se
Sebbe Nilsson at xsebbe@brevet.nu
Stig-Uno Svensson at locustella@telia.com

All photos copyrighted by Björn Anderson. If you are interested in using any of the photos, please contact Björn.



Band-tailed Earthcreeper

Itinerary

Part 1 by Mathias Bergström: Iguazu, Buenos Aires (MB, SN)

Friday 16 Nov

Mathias and Sebbe left Stockholm Arlanda in the afternoon with a Lufthansa over-night flight via Frankfurt to Buenos Aires (BA).

Saturday 17 Nov

We arrived at Ezeiza Int. Airport south of BA in the morning and transferred by bus to the domestic Jorge Newbury airport north of the city. At noon we flew with an Austral flight to Puerto Iguazu in Misiones. This was a 2.5 hours flight and we arrived to a very warm and sunny Puerto Iguazu. After checking in to our hotel near the bus station (Hotel St. George) we spent the afternoon along the riverside and a local park. We got good views of Scale-throated Hermit and Black-throated Mango. Other nice birds include Chestnut-bellied Euphonias, Purple-throated Euphonias and Green-headed Tanagers.

Sunday 18 Nov

We took the first morning bus (6.30 am) from Puerto Iguazu to the National Park. The park does not open until 8 am but we managed to walk in around 7.30. We spent the morning along the Macuco trail and Yacaratia trail. We found several mixed flocks of tanagers, foliage-gleaners and woodcreepers. One of the highlights was a pair of stunning Swallow Tanagers. The afternoon was spent along the boardwalks by the magnificent falls and we also visited the island San Martin. Several Toco Toucans were seen in the canopy and we also encountered a pair of Chestnut-eared Aracaris in a palm tree.

Monday 19 Nov

This morning we took a cab to the park. Unfortunately we could not get in to the park before 8 am but had to wait outside. We again walked along the highly productive Macuco trail. Near the start of the trail there is a White-bearded Manakin lek. It took some time before we obtained good views of the birds. Here we also found a Rufous-capped Motmot. In the afternoon we planned to visit the area around Puerto Canoas but unfortunately the road and the Nandu campsite was closed due to flooding and a damaged bridge. Instead we spent the afternoon by the upper boardwalks. We failed to find any Blue-fronted Piping-guans, but an Amazon Kingfisher and a Snail Kite was seen.

Tuesday 20 Nov

Today we visited the park on the Brazilian side. We took the bus from Puerto Iguazu to Foz do Iguaçu. At the border crossing we had to leave the bus to have our passports checked. The bus didn't wait so instead we had to wait for the next bus. Instead of going all the way to downtown we jumped off the bus at the first stop along the main road between downtown and the park, crossed the road and waited for the bus that would take us to the park entrance. At the entrance we tried to get a permit to walk the Poco Preto trail but failed. Instead we joined one of the tour buses that took us to the hotel inside the park. From here we birded along the road back towards the entrance. It was not so productive but we managed to find

some new species for the trip, i.e. Lineated Woodpecker and Black-crowned Tityra. In the afternoon we walked the boardwalks and got fantastic views of the falls. We returned to Puerto Iguazu quite early in the afternoon.

Wednesday 21 Nov

Our last day at Iguazu we again took a taxi towards the park but this time we decided to start birding at the intersection of RN 12 and the park entrance road. Just after the intersection there is a marsh on the left side of the road (park entrance road). Here we had Slaty-breasted Wood-rail, Robust Woodpecker and Blue-naped Chlorophonia. We reached the park entrance by 8 am when the park opened and again walked the Macuco trail. By 1 pm we returned to Puerto Iguazu and 3.30 pm we jumped on the “Via Bariloche” bus towards Buenos Aires. From the very luscious and comfortable bus we saw our only Swallow-tailed Kite of the trip.

Thursday 22 Nov

After having a good night sleep on the bus, we arrived in BA in the morning. We found a cheap hotel not far from Costerana Sur. We decided to do some sightseeing in the city but after visiting the famous shopping streets and seeing the pink palace, we ended up in Costerana Sur for some birding.

Friday 23 Nov

At eight O'clock we met up with Sergio Corbet, a local birder who was going to show us Costerana Sur. Tomas Svensson, a Swedish birder at the time living in BA, also joined us. It was very strange weather this day with rainstorms coming and going, but we succeeded in finding good birds like Giant Wood-Rail and Spot-billed Gallinule. The afternoon was spent strolling around in the city.

SUS and Björn left a snowy Arlanda in the afternoon with a Lufthansa over-night flight via Frankfurt to Buenos Aires (BA).

Part 2 by Björn Anderson: Buenos Aires, Patagonia and Tierra del Fuego (All)

Saturday 24 Nov

Landed on time in BA in the morning and met up with Mathias and Sebbe who had already picked up the Hertz car. Without any problems we were soon on our way through the 9-million-people city trying to find our way southeast. Although it took some time to get to birdy habitat, we were soon ticking off the first lifers. After a while we found ourselves driving through splendid Pampas grasslands and wetlands. The landscape was absolutely flat and full of all sorts of waterbirds. Best in class was an American Painted-Snipe. We made many stops en route to the final destination San Clemente. In the evening we still had time to bird Punta Rasa with beaches and pampas grasslands. Stayed at a hotel in “central” San Clemente and had a traditional dinner with giant steaks and fish.



Greater Rheas, San Clemente

Sunday 25 Nov

Spent all morning around Punta Rasa, working the small woodland at the lighthouse, the point itself with the beaches and mudflats and also the grassy areas around the point. Early afternoon was spent in the wetlands west of San Clemente, i.e. at the canal at km 280, where



Two-banded Plover, Punta Rasa

Sulphur-bearded Spinetail and a brief Stripe-backed Bittern were seen. Having seen virtually all the San Clemente target birds, we set course for Atalaya in the late afternoon. Atalaya is a small village by the sea just north of Magdalena almost all the way back to BA. Close to the shore there is a decent patch of gallery forest transect by reedy wetlands. Birded this area until dusk when we had splendid views of a displaying pair of Rufous-sided Crakes as a finale of another excellent day. Stayed at a hotel in central Magdalena (no hotels in Atalaya).

Monday 26 Nov

Pre-dawn departure and back to Atalaya where Curve-billed Reedhaunter and Giant Wood-Rail were among the targets. Scored fairly soon on the furnarid and other bit and pieces, but eventually we had to give up on the Wood-Rail. Decided to get a few hours at Costanera Sur before the late afternoon flight to Trelew. At the gate to the reserve we learned that it is closed on Mondays so we had to be content with birding along the pools outside the reserve itself. Nevertheless we picked up a few of the wanted birds.

Flight to Trelew was on time and we soon crossed the flat Pampas on our way south. Landed in Trelew at dusk and picked up a rental car (not the one we had pre-paid though, so we had to rent a new one!). Stayed at a hotel in central Trelew and had a late dinner.

Tuesday 27 Nov

Pre-dawn start again. Knowing that the days would get longer the further south we would get, we soon realised that sleep would be a very scarce ingredient on this trip. As it turned out we got between 4-5 (occasionally 6) hours each night. The target for the morning was to drive south to Punta Tombo where there is a huge penguin colony. The bushy steppe along the road was excellent birding and we scored on many of the Patagonian specialities. At the gate at Punta Tombo we asked for other possible penguins and got the answer that there had been a Penguin el Rey yesterday. This caused one of the few twitches of the trip as we leaped into the car and spun the last bit to the ocean. The area was truly fantastic. Loads of penguins everywhere, even trying to bite the tripods, Chubut Steamerducks and rarest of all, a majestic King Penguin standing tall on the beach amongst his magellanic cousins. Even if it was difficult to drag us from this site we turned north and passed Trelew continuing to the Valdez peninsula. Birded in a scrubby ravine north of Puerto Madryn (Carbonated Sierra-Finch, Rusty-backed Monjita, Patagonian Canastero) for several hours before we did the final bit to Puerto Piramides. Arrived early enough to visit the sea-lion colony immediately west of P Piramides, before dusk. Saw our only Sheathbill (puh!) as well as a host of coastal birds. Stayed at a hotel in P Piramides and had a delicious seafood dinner.



King Penguin, Punta Tombo

Wednesday 28 Nov

At dawn we were off and drove northeast on the huge peninsula towards Punta Norte. Birded en route, but did not find too many interesting birds. Spent a couple of hours scanning the beaches and sea at the cape before continuing south along the east coast. Around midday we found ourselves at Caleta Valdez where we found a lonely vagrant Chinstrap Penguin on a sandy spit below the restaurant, apparently the second record for continental South America.



Chinstrap Penguin, Caleta Valdez

Celebrated with lunch and headed west to look for whales in the bay north of the peninsula. In spite of the rather rough sea we found at least one Southern Right Whale performing well but distantly. With most of the target birds in the bag we drove north to San Antonio Oeste (SAO) for a couple of nights stay. Arrived in time for some initial birding close to SAO but had difficulties in finding the correct sites. As it turned out, our gen was slightly erroneous in giving directions from SAO rather than Las Grutas, which only struck us the day after. Eventually settled for a seaside hotel in Las Grutas.

Thursday 29 Nov

Of course a pre-dawn departure in order to reach the estancia at Laguna del Monte about 40 km east of SAO. The site was easy to find and we parked the car by the main road and did the short birdy walk to the farm itself. Saw most of the specialities around the windmill and during a short walk northwest through the bushes. Goodies included a pair of Yellow Cardinals and White-tipped Plantcutters, breeding Brown Cachalotes, singing Sandy Gallito, Hudson's Black-Tyrant and many more. Around midday the activity dropped and we returned to SAO for a late breakfast and then tried a couple of similar areas 10-20 km north of SAO, without adding any special new birds. The afternoon was spent in the sand dunes east of Las Grutas in search of Sandy Gallito. We failed to find any, but connected with breeding White-throated Cachalotes. Before dusk we drove west out of Las Grutas and to our surprise found out that it had to be the stakeout site for Gallitos. We soon tracked down one bird that performed out in the open and satisfied we returned to Las Grutas for dinner.



Yellow Cardinal, Laguna del Monte

Friday 30 Nov

Back at the site west of Las Grutas before dawn in order to try for owls, with no success. Saw another Gallito and a Hudson's Black-Tyrant among others. As we still missed Cinnamon Warbling-Finch, we decided to go back to Laguna del Monte. The bird activity was alas not as good as the day before and after a few hours in the heat we gave up and started the journey south towards Trelew. Arrived in the afternoon in time to investigate the wetlands northeast of

town. As it turned out these wetlands were in fact a series of small to large lakes (herein named Lago Trelew) with an excellent collection of waterbirds. The wind was up and it was difficult to find any Silvery Grebes.

Saturday 1 Dec

Back at Lago Trelew and soon located a distant Silvery Grebe and more views of the common waterbirds. After a lunch in Trelew we boarded our flight southwards to Calafate where we landed on time (again!). Santiago Imberti, an excellent birder and guide from Rio Gallegos, met up at the airport with his 4WD loaded with camping gear and food. Within minutes we were birding the shore of Lago Argentino at the outskirts of Calafate. The staked out Magellanic Plover refused to appear, but we got a good sample of new Patagonian birds. The afternoon and evening was spent driving, birding en route, towards Glacier National Park. Picked up wanted birds like Rufous-tailed Plantcutters, a pair and young of Spectacled Duck, the first Condors and many more. Eventually we reached the campground at Bahia Escondida not too far from the Glacier. When the glacier calved it was clearly heard. While Santiago cooked the dinner, we scored nice views of a responsive Magellanic Tapaculo in a gully just above the campground. After dinner we went owling and surprisingly quickly tracked down a pair of Rufous-legged Owls. Then prepared for a very cold night in the tent, but whisky and a calling Austral Pygmy-Owl helped.

Sunday 2 Dec

Woke up early, eager to go birding in the forest. Started with the area around the glacier, which was a fantastic sight. The glacier is part of one of the world's largest glaciers, moves 1.5-2 meters a day and the edge is about 70 meters high. A Magellanic Woodpecker performed well and a few more birds were seen, although the forest contained surprisingly few species and individuals.

Late morning we drove to the other side of Lago Roca and had breakfast near the ranger station, but only after having trashed a marshy area in the forest for South American (or rather Magellanic) Snipes. After some more roadside birding we returned to Calafate for an urgent appointment with the Magellanic Plovers. This time one bird greeted us with super views down to a few meters. We fueled up the car and ourselves and set off for a looong, looong drive to Estancia La Angostura near the Strobel Plateau. The drive was brightened by some good music and a few new birds, although the latter were far and few in between. Arrived La Angostura in the evening and had time to hear a couple of Austral Rails before dark fell. Stayed at the estancia and were served a good dinner.

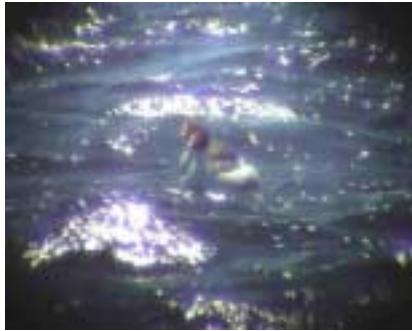


Magellanic Plover, El Calafate

Monday 3 Dec

This was the day of the Search for the Holy Grebe. Before breakfast we started with some brief but good views of Austral Rails in the marsh just outside the estancia. The first place to search for the grebe was Lago Angostura, but we could only find a flock of Silvery Grebes in the extremely windy conditions. A very rare Red/Red-necked Phalarope was seen in the lake,

but could not be positively identified to species. As the Hooded Grebe was not to be seen, we had to start a long drive up towards the plateau where there are a few lakes where they breed



Hooded Grebes

if the conditions are right. We were lucky and found as many as about 60 birds in the first large lake we stopped at and one of the most wanted birds of the trip was in the bag! It was difficult to leave this barren and off-the-beaten-track place but now we had a very long drive back to La Angostura and then a half-day of driving south to Rio Gallegos. Not many birds were seen along the road and we arrived at Rio Gallegos in the evening. We quickly found a hotel and had dinner before falling asleep for as many as 6 hours!

Tuesday 4 Dec

Woke up after a real lie-in and were picked up by Santiago (who had stayed at his home overnight) for a drive to Cabo Virgenes, southeast of Rio Gallegos. The five wanted birds (Canary-winged Finch, Rufous-throated Dotterel, Ruddy-headed Goose, Austral Canastero and Magellanic Horned Owl) fell quickly thanks to the knowledge of Santiago. Lunch was eaten below the lighthouse while watching loads of seabirds passing by. In the afternoon we went back to Rio Gallegos for a fairly early evening. Stayed at the same hotel and had a nice traditional dinner (meat of course).



Rufous-chested Dotterel, Cabo Virgenes

Wednesday 5 Dec

A morning excursion to a rocky area west of Rio Gallegos in search of Cordilleran Canastero was fruitless. Instead returned to Rio Gallegos for a quick lunch before taking the short midday flight to Ushuaia on Tierra del Fuego. Arrived as scheduled and picked up a rental car (not the one pre-booked of course...). Spent some time checking the options for boat-trips on the Beagle channel before approaching the Martial Glacier in search of White-bellied Seed-Snipe. Spent many hours trashing the scree slopes and streams below the glacier. Scored on Yellow-bridled Finches and other lifers but the Seed-Snipes did not show off. In the evening we gave up and returned to the town of Ushuaia and in particular to the sewage outlet, which proved good for all sorts of scavengers like White-throated Caracara, skuas, gulls and also some geese and ducks. Stayed at a hotel in the outskirts of town and had a normal late dinner.



Yellow-bridled Finch, Martial Glacier

Thursday 6 Dec

Early morning saw us in the forest at Tierra del Fuego National Park. Worked a few trails and picked up some good birds like Magellanic Woodpecker, Dark-bellied Cinclodes and White-throated Treerunner, before the first rain of the trip hit us. Instead of getting soaked we



Magellanic Woodpecker, Tierra del Fuego

returned to town for breakfast and when the weather cleared we headed back to the Martial Glacier for a second go on the Seed-Snipe. We were much more confident now as it was a different time of the day with no hikers around, but nevertheless we failed again.

In the afternoon we drove east to Estancia Harborton and even further east of that. The rain came and went in periods, but in between we had some good birding in the marshy areas, forest and also the shoreline with views over the Beagle channel. Came back to Ushuaia in the evening and stayed at the same hotel.

Friday 7 Dec

Having found fresh droppings of the Seed-Snipes the day before, we (or at least I) were now absolutely sure that we would get it on our third try as we walked up to the area at dawn. Despite working all of the slopes, we eventually had to give up again on this seldom-seen species. This day was the day for the boat-trip in the Beagle channel and we were surprised that it was virtually calm weather. Loads of albatrosses were sitting on the water, waiting for some winds. A few Southern Fulmars flew past, but the prize birds were of course the Magellanic Diving Petrels and the nesting Gentoo Penguins.



Gentoo Penguin, Haberton

Saturday 8 Dec

A new day and a new try for the Seed-Snipe at the Martial Glacier. This time we walked even higher and searched an even wider area, but unfortunately with the same result. Droppings were found at most places so obviously the birds are around, but it is 10000-dollar questions where the h*** they are hiding! Knowing that I would get back to this site when on an Antarctica trip I finally had to give up on this star bird. Spent some time in Ushuaia and at the gate to Tierra del Fuego NP (Chilean Hawk made it to the list) before going to the airport for an evening flight north to Buenos Aires. At arrival in BA we took a taxi to the already pre-booked hotel close to Costanera Sur, where we checked in late in the evening.

Sunday 9 Dec



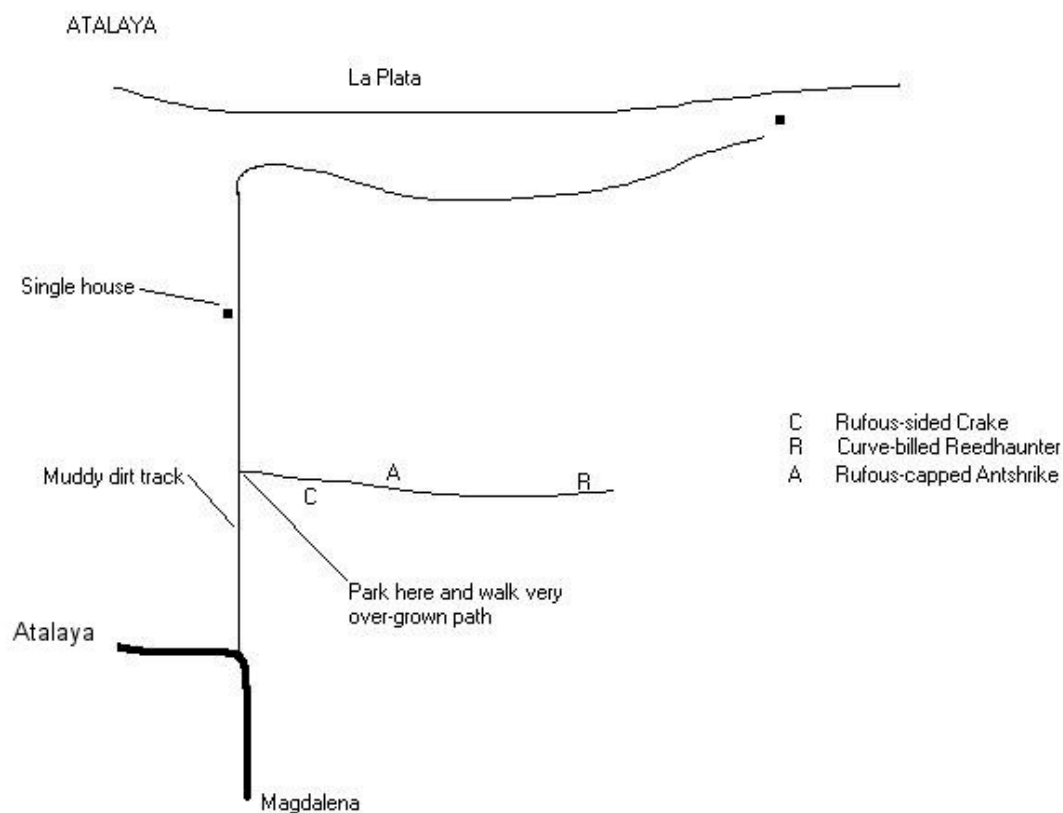
Great Pampa-Finch, Costerana Sur

An easy morning as the reserve at Costanera Sur does not open until 8.00. We spent a few hours trying to locate Giant Wood-Rail. Did not succeed but saw some other interesting species, like Sooty-fronted Spinetail. After lunch we took a taxi to the international airport for a long overnight flight back to Sweden where I arrived Monday afternoon in time to pick up the kids at Kindergarten.

Site descriptions

Atalayia

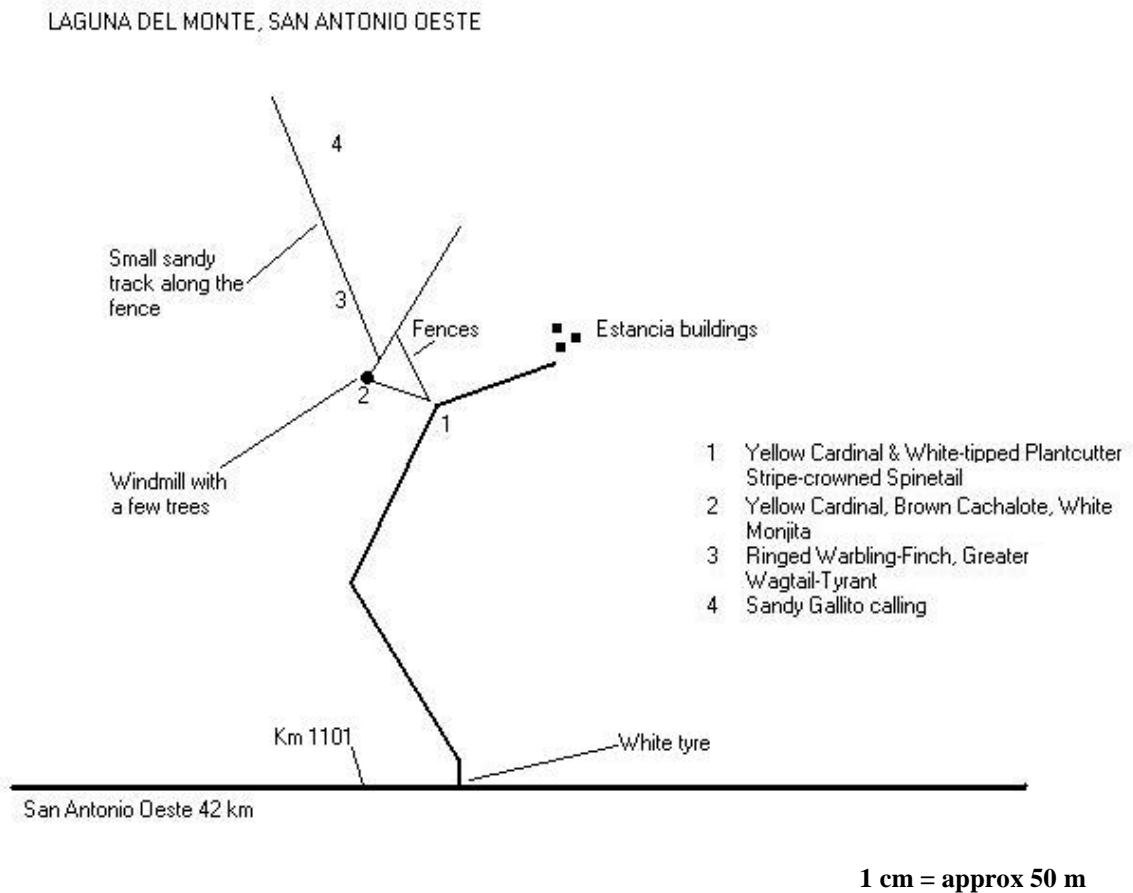
Atalayia is situated close to the town of Magdalena approx. 110 km southeast of Buenos Aires. The muddy dirt track was barely drivable the first 100 m. From where we parked the car, we had to cross a barb-wired fence and a ditch to walk the very overgrown path. We walked this path approx. 400 meters. The path along the shore is much easier to walk and also worth checking.



1 cm = approx 50 m

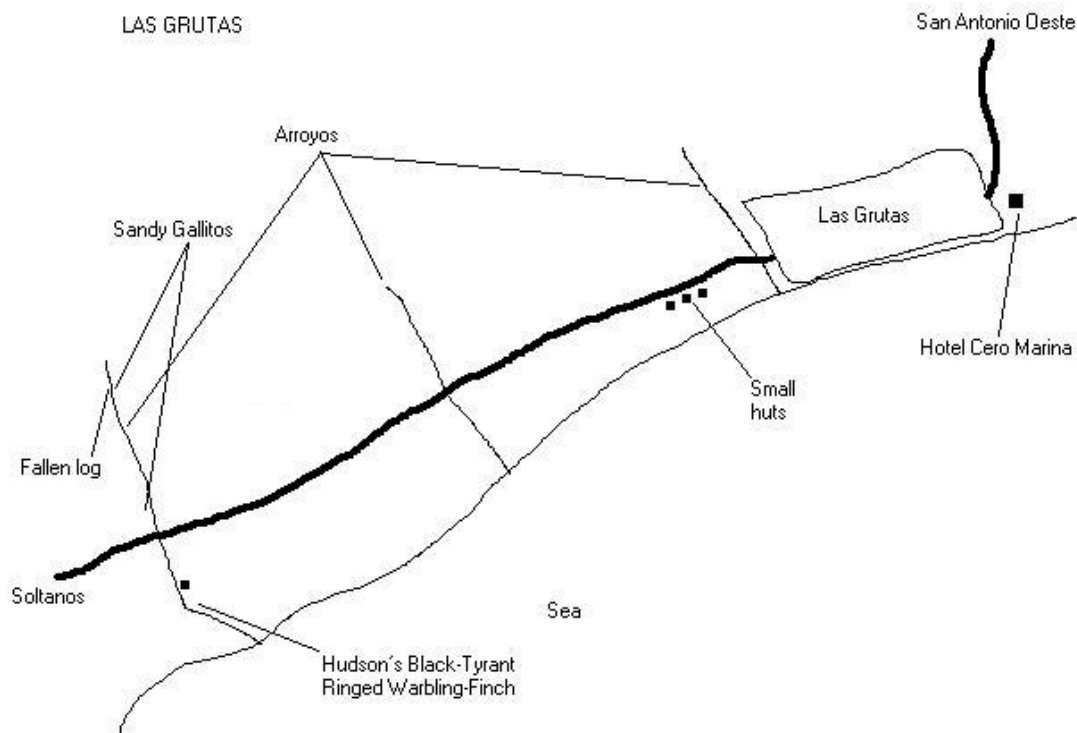
Laguna del Monte

Laguna del Monte is a ranch situated 42 Km east of San Antonio Oeste on the road towards Viedma. There was a locked gate marked “Laguna del Monte” by the white tyre. We parked our car there and walked in.



Las Grutas

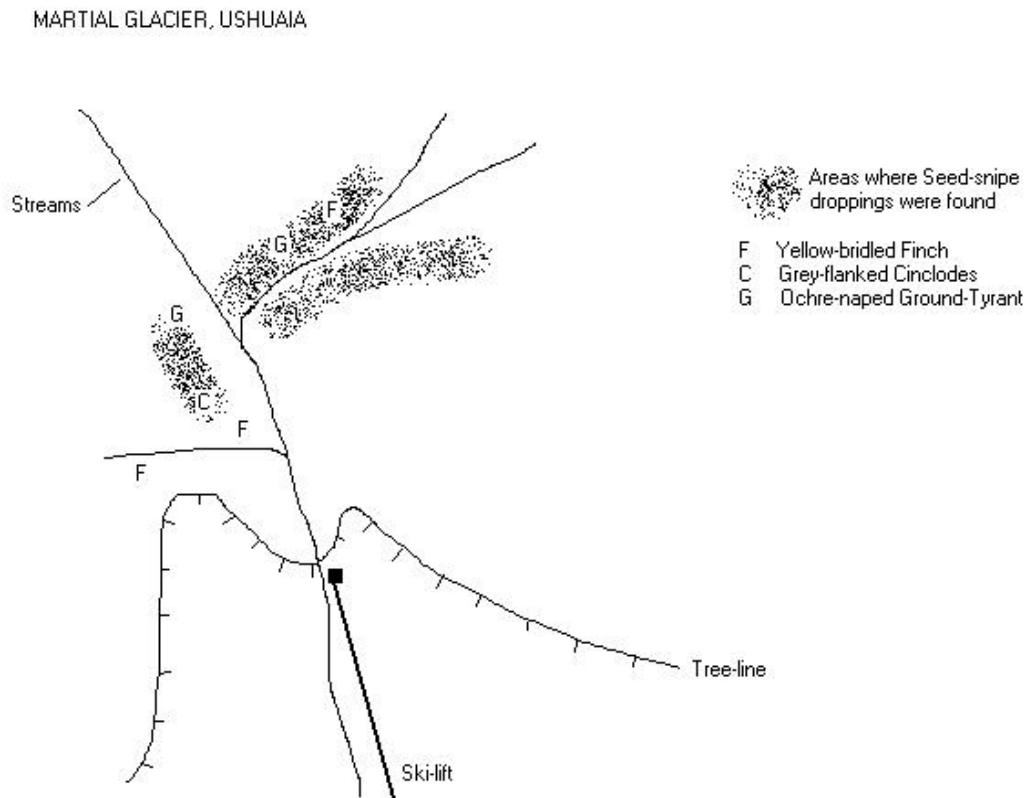
Las Grutas is a beach resort 17 Km southwest of San Antonio Oeste. To reach the site for Sandy Gallito you go south of town and drive the dirt road towards Soltanos. You pass some small huts where they sell fishes and pulpitos. After a few Km you reach a third gully (arroyo). We parked our car here and walked along the dry riverbed on both side of the road. By the abandoned house there is a good patch of bushes.



Sandy Gallito, Las Grutas

Martial Glacier, Ushuaia

The base of the skilift is approx. 7 Km northwest of town. The skilift does not open until 10 am so at some of our visits we walked the distance instead (30 minutes easy walking).



LIST OF BIRDS

GREATER RHEA (*Rhea americana*)

30 west of San Clemente

LESSER RHEA (*Pterocnemia pennata*)

1 Punta Tombo, 10+ El Calafate-La Angostura, 10+ Rio Gallegos-Cabo Virgenes

TATAUPA TINAMOU (*Crypturellus tataupa*)

1 heard Iguazú N.P

DARWIN'S NOTHURA (*Nothura darwinii*)

1 heard between Puerto Piramide and Punta Norte on Peninsula Valdés.

ELEGANT CRESTED TINAMOU (*Eudromia elegans*)

30+ between Trelew and Punta Tombo, 50+ Valdes peninsula, 1 near San Antonio Oeste

HOODED GREBE (*Podiceps gallardoi*)

60 at the Strobel Plateau foothills, north of Lago Cardiel

WHITE-TUFTED GREBE (*Podiceps rolland*)

Common Costerana Sur, 2 west of San Clemente, 5 Lago de Trelew

SILVERY GREBE (*Podiceps occipitalis*)

1 Lago de Trelew, 20 at Lago Angostura

PIED-BILLED GREBE (*Podilymbus podiceps*)

Common Costenera Sur

GREAT GREBE (*Podiceps major*)

2 Costerana Sur, 1 Punta Rasa, 10 Punta Tombo, 8 Cabo Virgenes, 4 Tierra del Fuego

BLACK-BROWED ALBATROSS (*Diomedea melanophrys*)

10 Valdes peninsula, 100+ Cabo Virgenes, 3000+ Beagle channel

SOUTHERN GIANT PETREL (*Macronectes giganteus*)

3 Punta Tombo, 100+ Peninsula Valdés, 20+ Cabo Virgenes, 20 Ushuaia sewage outlet and a few in Beagle Channel

SOUTHERN FULMAR (*Fulmarus glacialis*)

3 Beagle channel

WHITE-CHINNED PETREL (*Procellaria aequinoctialis*)

5+ Cabo Virgenes

SOOTY SHEARWATER (*Puffinus griseus*)

50+ Cabo Virgenes

MANX SHEARWATER (*Puffinus puffinus*)

30+ off Punta Norte, Valdes peninsula

WILSON'S STORM-PETREL (*Oceanites oceanicus*)

1 Beagle channel (BA)

MAGELLANIC DIVING-PETREL (*Pelecanoides magellani*)

40+ Beagle channel

KING PENGUIN (*Aptenodytes patagonica*)

1 Punta Tombo

GENTOO PENGUIN (*Pygoscelis papua*)

8 at penguin colony outside Estancia Haberton, Beagle channel

CHINSTRAP PENGUIN (*Pygoscelis Antarctica*)

1 Caleta Valdes

MAGELLANIC PENGUIN (*Spheniscus magellanicus*)

Common Punta Tombo, Isla de los Pajaros, Cabo Virgenes, Beagle channel

ANHINGA (*Anhinga anhinga*)

3 Iguazu N.P

NEOTROPIC CORMORANT (*Phalacrocorax olivaceus*)

10+ Iguazu N.P, 5 west of San Clemente, 30+ Costerana Sur, 1 Peninsula Valdes, 5 Lago Trelew, 3 La Angostura

ROCK CORMORANT (*Phalacrocorax magellanicus*)

2 Punta Tombo, 20+ Peninsula Valdés, 10+ Cabo Virgenes, common Beagle channel

IMPERIAL CORMORANT (*Phalacrocorax atriceps*)

2 Punta Tombo (albiventer), 5 San Antonio Oeste (albiventer), 20 Cabo Virgenes (atriceps), fairly common Canal Beagle (atriceps). Some birds in the Beagle channel may have been closer to albiventer and they are reportedly interbreeding to a fairly large extent.

COCOI HERON (*Ardea cocoi*)

1 Buenos Aires, 2 west of San Clemente, 1 Costenera Sur

WHISTLING HERON (*Syrigma sibilatrix*)

5+ around San Clemente, 1 Costerana Sur

GREAT EGRET (*Egretta alba*).

15+ Iguazu, common around San Clemente, a few Costerana Sur

SNOWY EGRET (*Egretta thula*).

1 Iguazú N.P, common San Clemente and Costerana Sur, 1 Peninsula Valdés

CATTLE EGRET (*Bubulcus ibis*)

5 Costerana Sur, common around San Clemente

STRIPE-BACKED BITTERN (*Ixobrychus involucris*)

1 Km280 west of San Clemente

RUFESCENT TIGER-HERON (*Tigrisoma lineatum*)

1 Costerana Sur (MB, SN)

STRIATED HERON (*Butorides striatus*)

2 Iguazú N.P, 10+ Costenera Sur. Ssp striatus

BLACK-CROWNED NIGHT-HERON (*Nycticorax nycticorax*)

Fairly common Iguazu, 1 San Clemente, 1 Costerana Sur, 2 Las Grutas, 1 Lago Trelew and 1 near Estancia Haberton east of Ushuaia. Ssp obscurus in the south and ssp hoactli in the north

MAGUARI STORK (*Euxenura maguari*).

50+ around San Clemente

BLACK-FACED IBIS (*Theristicus melanopis*)

1 near San Antonio Oeste, 10+ Lago Argentino, 5 at La Angostura, 2 near Cabo Virgenes, 10+ Tierra del Fuego N.P, 20+ near Estancia Haberton east of Ushuaia. Separated from Andean form *branickii* based on morphological and ecological differences.

BARE-FACED IBIS (*Phimosus infuscatus*)

Fairly common west of San Clemente. Ssp *infuscatus*

WHITE-FACED IBIS (*Plegadis chihi*)

Common around San Clemente, 5 Lago Trelew

ROSEATE SPOONBILL (*Ajaia ajaja*)

25+ west of San Clemente

CHILEAN FLAMINGO (*Phoenicopterus chilensis*)

18 Punta Rasa, 1 Peninsula Valdes, 250 Lago Trelew, 30 Lago Argentino, 4 Cabo Virgenes

SOUTHERN SCREAMER (*Chauna torquata*)

25 west of San Clemente

FULVOUS WHISTLING-DUCK (*Dendrocygna bicolor*)

1 Costenera Sur, 2 west of San Clemente

WHITE-FACED WHISTLING-DUCK (*Dendrocygna viduata*)

4 Costerana Sur, 5 west of San Clemente

COSCOROBA SWAN (*Coscoroba coscoroba*)

10+ Costerana Sur, 7 west of San Clemente, 5 Lago Trelew

BLACK-NECKED SWAN (*Cygnus melanecoryphus*)

30+ Costerana Sur, 50+ west of San Clemente, 10 Lago Argentino, 3 El Calafate-La Angostura

KELP GOOSE (*Chloephaga hybrida*)

50+ along the coast around Ushuaia

UPLAND GOOSE (*Chloephaga picta*)

Common in the southern part of the country. Inland birds are whiter and less barred than coastal birds.

ASHY-HEADED GOOSE (*Chloephaga poliocephala*)

30+ at Lago Roca west of El Calafate, 10+ Tierra del Fuego N.P, common around Haberton east of Ushuaia

RUDDY-HEADED GOOSE (*Chloephaga rubidiceps*)

7 at estancia between Rio Gallegos and Cabo Virgenes, 2 + 5 pulli Cabo Virgenes

CRESTED DUCK (*Lophonetta specularioides*)

4 Punta Tombo, 4 Peninsula Valdes, common Lago Trelew, common in the south. Ssp *specularioides*.

SPECTACLED DUCK (*Anas specularis*)

2 + 1 pulli Los Glaciares N.P

CHILOE WIGEON (*Anas sibilatrix*)

2 west of San Clemente, common Lago Trelew, El Calafate, Cabo Virgenes, 5 Tierra del Fuego

YELLOW-BILLED PINTAIL (*Anas georgica*)

2 Costerana Sur, 5 west of San Clemente, 2 San Antonio Oeste, common at Lago Trelew, common around El Calafate and north to the Strobel Plateau foothills.

SPECKLED TEAL (*Anas flavirostris*).

Small numbers around San Clemente, 50+ Costerana Sur, common at Lago Trelew, around El Calafate and north to the Strobel Plateau foothills, 5 east of Ushuaia. Nominate ssp *flavirostris*.

RED SHOVELER (*Anas platalea*)

10+ west of San Clemente, 10+ Lago Trelew, 1 El Calafate

CINNAMON TEAL (*Anas cyanoptera*)

3 Lago Trelew

SILVER TEAL (*Anas versicolor*)

25+ San Clemente, 5 San Antonio Oeste, 30+ Costenera Sur

FLIGHTLESS STEAMER-DUCK (*Tachyeres pteneres*)

20+ Ushuaia sewage outlets, 2 Estancia Haberton

FLYING STEAMER-DUCK (*Tachyeres patachonicus*)

2 Lago Argentino, 10+ Strobel Plateau foothills, 10+ along the coast around Ushuaia

CHUBUT STEAMER-DUCK (*Tachyeres leucocephalus*)

5 Punta Tombo

ROSY-BILLED POCHARD (*Netta peposaca*)

5 Costerana Sur, common around San Clemente and Lago Trelew

BRAZILIAN DUCK (*Amazonetta brasiliensis*)

2 Foz do Iguazu (Brazil), 5 Atalaya

LAKE DUCK (*Oxyura vittata*)

Common Costerana Sur, common Lago Trelew, a few Lago Argentino

ANDEAN DUCK (*Oxyura ferruginea*)

Several at Lago Argentino, 20+ Lago Angostura

ANDEAN CONDOR (*Vultur gryphus*)

30+ Los Glaciares N.P, 3 Estancia Haberton east of Ushuaia

TURKEY VULTURE (*Cathartes aura*)

5+ Iguazú N.P, 2 Punta Tombo, 10+ Peninsula Valdes, common around San Antonio Oeste and Trelew, 2 Ushuaia sewage outlet. Ssp Jota

BLACK VULTURE (*Coragyps atratus*)

Common Iguazu N.P

BLACK-CHESTED BUZZARD-EAGLE (*Geranoaetus melanoleucus*)

8 around El Calafate and Glaciares N.P, 5+ Strobel Plateau foothills. Ssp australis

SWALLOW-TAILED KITE (*Elanoides forficatus*)

1 Puerto Iguazu-Buenos Aires

WHITE-TAILED KITE (*Elanus leucurus*)

2 west of San Clemente

PLUMBEOUS KITE (*Ictinia plumbea*)

Common Iguazú N.P

SNAIL KITE (*Rostrhamus sociabilis*)

1 Iguazu, 1 west of Buenos Aires, common around San Clemente

LONG-WINGED HARRIER (*Circus buffoni*)

30+ around San Clemente

CINEREOUS HARRIER (*Circus cinereus*)

2 west of San Clemente, 2 pairs Las Grutas, 3 El Calafate, 5 Strobel Plateau foothills, 2 Rio Gallegos-Cabo Virgenes

CHILEAN HAWK (*Accipiter chilensis*)
1 Tierra del Fuego N.P

ROADSIDE HAWK (*Buteo magnirostris*)
3 Iguazu N.P, 1 San Clemente, 2 Atalaya

SWAINSON'S HAWK (*Buteo swainsoni*)
1 west of San Clemente

RED-BACKED HAWK (*Buteo polyosoma*)
1 Peninsula Valdes, 3 San Antonio Oeste, 5 Strobel Plateau foothills

WHITE-THROATED CARACARA (*Polyborus albogularis*)
1 Ushuaia sewage outlets, 1 Tierra del Fuego N.P, 2 towards Garibaldi pass east of Ushuaia

SOUTHERN CARACARA (*Caracara plancus*)
2 west of Buenos Aires, common around San Clemente, Atalaya, El Calafate, Strobel Plateau foothills, Cabo Virgenes and Tierra del Fuego. Ssp plancus

CHIMANGO CARACARA (*Milvago chimango*)
Common

YELLOW-HEADED CARACARA (*Milvago chimachima*)
2 Iguazú N.P

PEREGRINE FALCON (*Falco peregrinus*)
1 Trelew. Ssp cassini

APLOMADO FALCON (*Falco aplomado*)
1 Las Grutas, 3 south of La Angostura. Ssp femoralis

AMERICAN KESTREL (*Falco sparverius*)
1 east of Atalaya, 2 Los Glaciares N.P, 2 near Ushuaia. Ssp cinnamominus

LIMPKIN (*Aramus guarauna*)
2 west of San Clemente. Nominated ssp guaruana

GIANT WOOD-RAIL (*Aramides ypecaha*)
2 Costenera Sur (MB, SN)

GREY-NECKED WOOD-RAIL (*Aramides cajanea*)
2 Costerana Sur (MB, SN)

SLATY-BREASTED WOOD-RAIL (*Aramides saracura*)
1 Iguazu N.P

AUSTRAL RAIL (*Rallus antarcticus*)
2 heard first evening and 1 + 1 pair seen next morning at Estancia La Angostura

PLUMBEOUS RAIL (*Rallus sanguinolentus*)
1 Costerana Sur, 2 west of San Clemente, 1 Lago Trelew. Probably nominate ssp

RUFOS-SIDED CRAKE (*Laterallus melanophaius*)
2 Atalaya

RED-GARTERED COOT (*Fulica armillata*)
1 west of San Clemente, common Costerana Sur, Lago Trelew and around Strobel Plateau foothills, 1 near Cabo Virgenes

WHITE-WINGED COOT (*Fulica leucoptera*)
Common Costerana Sur, west of San Clemente and Lago Trelew

RED-FRONTED COOT (*Fulica rufifrons*)
Common Costerana Sur, west of San Clemente and Lago Trelew

COMMON MOORHEN (*Gallinula chloropus*)
1 Costerana Sur. Ssp galeata

SPOT-FLANKED GALLINULE (*Porphyriops melanops*)
5 Costerana Sur, 1 west of San Clemente. Ssp crassirostris

WATTLED JACANA (*Jacana jacana*)
10+ Costerana Sur, a few west of San Clemente

MAGELLANIC SNIPE (*Gallinago magellanica*)
5 at marsh near rangerstation, Lago Roca west of El Calafate, 2 west of Estancia Moat, Tierra del Fuego. Ssp magellanica sometimes considered a separate species.

SOUTH-AMERICAN PAINTED-SNIPE (*Nycticryphes semicollaris*)
1 west of San Clemente

AMERICAN OYSTERCATCHER (*Haematopus palliatus*)
Common around San Clemente, Peninsula Valdes and San Antonio Oeste. Ssp palliatus

MAGELLANIC OYSTERCATCHER (*Haematopus leucopodus*)
1 Lago Argentino, 10+ Strobel Plateau foothills, 5 Cabo Virgenes, 5 Ushuaia, 10+ towards Estancia Haberton

BLACKISH OYSTERCATCHER (*Haematopus ater*)
25+ Peninsula Valdes, 2 west of Estancia Haberton

WHITE-BACKED STILT (*Himantopus melanurus*)
40+ west of San Clemente, common Lago Trelew

SOUTHERN LAPWING (*Vanellus chilensis*)
Common Costerana Sur, around San Clemente, Atalaya, San Antonio Oeste, Lago Trelew and El Calafate, Also seen on Tierra del Fuego. Probably ssp chilensis in the north and ssp fretensis in the south. Ssp differ morphologically and in their calls and have been proposed to be split in two or even three species.

AMERICAN GOLDEN PLOVER (*Pluvialis dominica*)
Common around San Clemente

GREY PLOVER (*Pluvialis squatarola*)
10+ Punta Rasa

TAWNY-THROATED DOTTEREL (*Oreopholus ruficollis*)
20+ around Strobel Plateau foothills

TWO-BANDED PLOVER (*Charadrius falklandicus*)
10+ Punta Rasa, 2 Lago Argentino, 40+ El Calafate and north to the Strobel Plateau foothills, 20+ Cabo Virgenes

SEMPALMATED PLOVER (*Charadrius semipalmatus*)
1 Punta Rasa

RUFIOUS-CHESTED DOTTEREL (*Zonibyx modestus*)
3 Rio Gallegos-Cabo Virgenes

MAGELLANIC PLOVER (*Pluvianellus socialis*)
1 Lago Argentino, 1 El Calafate-Tres Lagos, 1 north of Rio Gallegos

GREATER YELLOWLEGS (*Tringa melanoleuca*)
4 west of San Clemente, 10+ Punta Rasa, 2 Lago Trelew

LESSER YELLOWLEGS (*Tringa flavipes*)
5 Lago Trelew

SOLITARY SANDPIPER (*Tringa solitaria*)
5 Punta Rasa

RUDDY TURNSTONE (*Arenaria interpres*)
15+ Punta Rasa

SANDERLING (*Calidris alba*)
20+ Punta Rasa

BAIRD'S SANDPIPER (*Calidris bairdii*)
50+ Lago Angostura, 5 Rio Gallegos-Cabo Virgenes

WHITE-RUMPED SANDPIPER (*Calidris fuscicollis*)
Common Punta Rasa, 3 Lago Trelew, common Rio Gallegos-Cabo Virgenes

RED PHALAROPE (*Phalaropus fulicaria*)
One phalarope seen at Lago Angostura was either this species or Red-necked. Upperpart colouration, wingband and bill-size favours Red. Both species are extremely rare in Argentina and Red may not even have been recorded previously. Unfortunately the bird was seen at worst possible light conditions combined with a gale-force wind...

HUDSONIAN GODWIT (*Limosa haemastica*)
1 west of San Clemente, 5 Punta Rasa, 2 Lago Trelew

LEAST SEEDSNIPE (*Thinocorus rumicivorus*)
Common El Calafate-La Angostura-Rio Gallegos and towards Cabo Virgenes. Ssp *rumicivorus*

GRAY-BREASTED SEEDSNIPE (*Thinochorus orbignyianus*)
2 north of Lago Cardiel

SNOWY SHEARBILL (*Chionis alba*)
1 Puerto Piramides

POMARINE SKUA (*Stercorarius pomarinus*)
1 San Clemente port, 1 Punta Norte, Peninsula Valdes

CHILEAN SKUA (*Catharacta chilensis*)
3 Cabo Virgenes, 2 Rio Gallegos, 10+ Ushuaia sewage outlets and several seen in the Beagle channel

ANTARCTIC SKUA (*Catharacta antarctica*)
3 Punta Tombo, 2 Ushuaia sewage outlets

BLACK SKIMMER (*Rynchops niger*)
250 Punta Rasa

DOLPHIN GULL (*Leucophaeus scoresbii*)
2 Puerto Piramides, common around Ushuaia

KELP GULL (*Larus dominicanus*)
1 Costerana Sur (SN), Common in the Southern part of the country

GREY-HEADED GULL (*Larus cirrocephalus*)
20+ around San Clemente

OLROG'S GULL (*Larus atlanticus*)
30+ Punta Rasa

BROWN-HOODED GULL (*Larus maculipennis*)
Common around San Clemente, Lago Trelew, El Calafate, Strobel Plateau foothills and Rio Gallegos

SNOWY-CROWNED TERN (*Sterna trudeaui*)
2 west of San Clemente, 2 Punta Rasa

COMMON TERN (*Sterna hirundo*)
Common Punta Rasa

SOUTH AMERICAN TERN (*Sterna hirundinacea*)
50+ Peninsula Valdes, 5 Lago Trelew, common Beagle channel

SANDWICH TERN (*Sterna sandvicensis*)
2 Punta Norte, Peninsula Valdes. This form *eurygnatha* is sometimes treated as a species; Cayenne Tern.

ROYAL TERN (*Sterna maxima*)
15 Punta Rasa, 10+ Peninsula Valdes

PALE-VENTED PIGEON (*Columba cayennensis*)
A few seen daily in Iguazu N.P

PICAZURO PIGEON (*Columba picazuro*)
Common around Buenos Aires and San Clemente

SPOT-WINGED PIGEON (*Columba maculosa*)
Common around San Antonio Oeste and Trelew

ROCK DOVE (*Columba livia*) *INTRODUCED*
Common

EARED DOVE (*Zenaida auriculata*)
Common apart from Iguazú and Tierra del Fuego N.P

PICUI GROUND-DOVE (*Columbina picui*)
5 Puert Iguazu, 5 Buenos Aires, 1 Rawson

RUDDY GROUND-DOVE (*Columbina talpacoti*)
2 Iguazu N.P

WHITE-TIPPED DOVE (*Leptotila verreauxi*)
A few seen daily in Iquzu N.P

WHITE-EYED PARAKEET (*Aratinga leucophthalma*)
5-10 Iguazú N.P

BURROWING PARROT (*Cyanoliseus patagonus*)
100+ seen around San Antonio Oeste and Las Grutas, a few seen along the road north of Puerto Madryn

BLACK-HOODED PARAKEET (*Nandayus nanday*)
5 Costenera Sur

AUSTRAL PARAKEET (*Enicognathus ferrugineus*)
20+ Los Glaciares N.P, heard Tierra del Fuego N.P

MONK PARAKEET (*Myiopsitta monachus*)
Common around San Clemente and Costerana Sur

REDDISH-BELLIED PARAKEET (*Pyrrhura frontalis*)
3 Iguazú N.P

BLUE-WINGED PARROTLET (*Forpus xanthopterygius*)
5 Iguazú N.P

SCALY-HEADED PARROT (*Pionus maximiliani*)
6 Iguazú N.P

SMOOTH-BILLED ANI (*Crotophaga ani*)
Up to 5 seen daily Iguazu N.P

GREATER ANI (*Crotophaga major*)
5 Iguazu N.P

DARK-BILLED CUCKOO (*Coccyzus melacoryphus*)
1 Iguazu N.P, 3 Atalaya

GUIRA CUCKOO (*Guira guira*)
4 Iguazu N.P, single birds seen commonly around San Clemente, Atalaya and Costerana Sur

SQUIRREL CUCKOO (*Piaya cayana*)
Single birds seen daily in Puert Iguazu and Iguazu N.P

MAGELLANIC HORNED OWL (*Bubo magellanicus*)
1 on nest Cabo Virgenes

RUFIOUS-LEGGED OWL (*Strix rufipes*)
2 Los Glaciares N.P

BURROWING OWL (*Athene cunicularia*)
3 Punta Rasa, 1 Laguna del Monte

AUSTRAL PYGMY-OWL (*Glaucidium nanum*)
1 Tierra del Fuego N.P.

BAND-WINGED NIGHTJAR (*Caprimulgus longirostris*)
1 Las Grutas

GREAT DUSKY SWIFT (*Cypseloides senex*)
Common Iguazú N.P

SOOTY SWIFT (*Cypseloides fumigatus*)
30+ Iguazú N.P

ASHY-TAILED SWIFT (*Chaetura andrei*)
30+ Puerto Iguazu

SCALE-THROATED HERMIT (*Phaethornis eurynome*)
2 Iguazú N.P

BLACK-THROATED MANGO (*Anthracothorax nigricollis*)
2 Puerto Iguazu

WHITE-THROATED HUMMINGBIRD (*Leucochloris albicollis*)
2 Punta Rasa

GLITTERING-BELLIED EMERALD (*Chlorostilbon aureoventris*)
2 Iguazu N.P, 4 around San Clemente, 5 Costenera Sur

GILDED SAPPHIRE (HUMMINGBIRD) (*Hylocharis chrysura*)
5 Atalaya

BLACK-THROATED TROGON (*Trogon surrucura*)
2 Iguazú N.P

SURUCUA TROGON (*Trogon surrucura*)
5 Iguazú N.P

RINGED KINGFISHER (*Ceryle torquata*)
1 west of Buenos Aires

AMAZON KINGFISHER (*Chloroceryle amazona*)
1 Iguazú N.P

RUFOUS-CAPPED MOTMOT (*Baryphthengus ruficapillus*)
2 Iguazu N.P

CHESTNUT-EARED ARACARI (*Pteroglossus castanotis*)
2+3 Iguazú N.P

RED-BREASTED TOUCAN (*Ramphastos dicolorus*)
3 Iguazú N.P

TOCO TOUCAN (*Ramphastos toco*)
Up to 5 seen daily Iguazu N.P

CAMPO FLICKER (*Colaptes campestris*)
2 Iguazu N.P, 2 Costerana Sur, 5 around San Clemente

CHILEAN FLICKER (*Colaptes pitius*)
2 Los Glaciares N.P, 1 Strobel Plateau foothills

GREEN-BARRED WOODPECKER (*Colaptes melanochloros melanolaemus*)
1 Buenos Aires, 1 Punta Rasa, 5 Atalaya, 5 Costerana Sur

CHECKERED WOODPECKER (*Picoides mixtus*)
3 Atalaya, 1 Laguna del Monte

OCHRE-COLLARED PICULET (*Picumnus temminckii*)
8 Iguazú N.P

LINEATED WOODPECKER (*Dryocopus lineatus*)
1 Iguacu N.P (Brazil)

ROBUST WOODPECKER (*Campephilus robustus*)
3 Iguazu N.P

MAGELLANIC WOODPECKER (*Campephilus magellanicus*)
1 Los Glaciares N.P, 3 Tierra del Fuego N.P

WHITE-THROATED WOODCREEPER (*Xiphocolaptes albicollis*)
1 Iguazú N.P

NARROW-BILLED WOODCREEPER (*Lepidocolaptes angustirostris*)
1 Costerana Sur

LESSER WOODCREEPER (*Lepidocolaptes fuscus*)
1 Iguazu N.P

PLAIN-WINGED WOODCREEPER (*Dendrocincla turdina*)

3 Iguazu N.P

OLIVACEOUS WOODCREEPER (*Sittasomus griseicapillus*)

1 Iguazú N.P

COMMON MINER (*Geositta cunicularia*)

3 Peninsula Valdes, 1 San Antonio Oeste, Common around El Calafate and north to the Strobel Plateau foothills

SHORT-BILLED MINER (*Geositta antarctica*)

4+ Strobel Plateau foothills

SCALE-THROATED EARTHCREEPER (*Upucerthia dumetaria*)

5 Trelew-Punta Tombo, 2 Peninsula Valdes, 7 San Antonio Oeste, 10+ Strobel Plateau foothills, 5 west of Rio Gallegos. Ssp *dumetaria*

BAND-TAILED EARTHCREEPER (*Eremobius phoenicurus*)

1 Trelew - Punta Tombo, 1 north of Rio Gallegos

DARK-BELLIED CINCLODES (*Cinclodes patagonicus*)

A total of 10+ on Tierra del Fuego, seen below Martial Glacier, Tierra del Fuego N.P, on the way to Estancia Haberton and on islets in the Beagle channel. Ssp *patagonicus*

GREY-FLANKED CINCLODES (*Cinclodes oustaleti*)

1 below Martial Glacier. Ssp *hornensis*

BAR-WINGED CINCLODES (*Cinclodes fuscus*)

3 Cabo Virgenes, 5+ below Martial Glacier. Ssp *fuscus*

RUFOUS HORNERO (*Furnarius rufus*)

Common Iguazu, around Buenos Aires, San Clemente, Atalaya, 5 Laguna del Monte. Ssp *rufus*

CURVE-BILLED REEDHAUNTER (*Limnornis curvirostris*)

1 seen and 2 heard Atalaya

WHITE-THROATED CACHOLOTE (*Pseudoseisura gutturalis*)

3 Las Grutas

BROWN CACHALOTE (*Pseudoseisura lophotes*)

2 Laguna del Monte

SULPHUR-BEARDED SPINETAIL (*Cranioleuca sulphurifera*)

1 west San Clemente (Km280), 2 Costerana Sur

STRIPE-CROWNED SPINETAIL (*Cranioleuca pyrrhophia*)

1 laguna del Monte, 3 Las Grutas. Ssp *pyrrhophia*

YELLOW-CHINNED SPINETAIL (*Certhiaxis cinnamomea*)

1 Punta Rasa. Ssp *russeola*

WREN-LIKE RUSHBIRD (*Phleocryptes melanops*)

Common Costerana Sur and around San Clemente, 1 Lago Trelew

BAY-CAPPED WREN-SPINETAIL (*Spartonoica maluroides*)

1 seen and 8 heard Punta Rasa

THORN-TAILED RAYADITO (*Aphrastura spinicauda*)

Common Los Glaciares N.P and Tierra del Fuego N.P. Ssp *spinicauda*

FIREWOOD-GATHERER (*Anumbius annumbi*)

2 west of San Clemente

SHORT-BILLED CANASTERO (*Asthenes baeri*)

1 Laguna del Monte

SHARP-BILLED CANASTERO (*Asthenes pyrrholeuca*)

5 Trelew-Punta Tombo, 2 Peninsula Valdes, 2 La Angostura, 2 Strobel Plateau foothills, 2 north of Rio Gallegos.
Ssp flavogularis

PATAGONIAN CANASTERO (*Asthenes patagonica*)

1 Trelew-Punta Tombo, 10+ Peninsula Valdes, 10+ around San Antonio Oeste

HUDSON'S CANASTERO (*Asthenes hudsoni*)

1 Punta Rasa

AUSTRAL CANASTERO (*Asthenes anthoides*)

2 Cabo Virgenes

RUFIOUS-CAPPED SPINETAIL (*Synallaxis ruficapilla*)

1 Iguazu

SOOTY-FRONTED SPINETAIL (*Synallaxis frontalis*)

2 Costerana Sur. *Ssp frontalis*

SPIX'S SPINETAIL (*Synallaxis spixi*)

3 Atalaya

PALE-BREASTED SPINETAIL (*Synallaxis albescens*)

1 Laguna del Monte. *Ssp albescens*

TUFTED TIT-SPINETAIL (*Leptasthenura platensis*)

2 Punta Rasa

PLAIN-MANTLED TIT-SPINETAIL (*Leptasthenura aegithaloides*)

1 Puerto Piramide, 3 Laguna del Monte, 2 Las Grutas, 1 Cabo Virgenes. *Ssp pallida*

FRECKLE-BREASTED THORNBIRD (*Phacellodomus striaticollis*)

2 Costerana Sur, 3 around San Clemente

BLACK-CAPPED FOLIAGE-GLEANER (*Philydor atricapillus*)

2 Iguazú N.P

OCHRE-BREASTED FOLIAGE-GLEANER (*Philydor lichtensteini*)

3 Iguazú N.P

BUFF-FRONTED FOLIAGE-GLEANER (*Philydor rufus*)

1 Iguazú N.P

WHITE-EYED FOLIAGE-GLEANER (*Automolus leucophthalmus*)

1 Iguazú N.P

STREAKED XENOPS (*Xenops rutilans*)

1 Iguazú N.P

PLAIN XENOPS (*Xenops minutus*)

1 Iguazú N.P

WHITE-THROATED TREERUNNER (*Pygarrhichas albogularis*)

2 Tierra del Fuego N.P

SPOT-BACKED ANTSHRIKE (*Hypodaleus guttatus*)
2 Iguazu N.P (SN)

RUFOUS-CAPPED ANTSHRIKE (*Thamnophilus ruficapillus*)
2 Atalaya. Nominate ssp ruficapillus

VARIABLE ANTSHRIKE (*Thamnophilus caerulescens*)
2 Iguazu N.P

TUFTED ANTSHRIKE (*Mackenziaena leachi*)
1. Iguazu N.P

WHITE-SHOULDERED FIRE-EYE (*Pyriglena leucoptera*)
1 Puerto Iguazu

PLAIN ANTVIREO (*Dysithamnus mentalis*)
7 Iguazú N.P

RUFOUS-WINGED ANTWREN (*Herpsilochmus rufimarginatus*)
2 Iguazú N.P

RUFOUS GNATEATER (*Conopophaga lineata*)
1 Iguazú N.P

SANDY GALLITO (*Teledromas fuscus*)
1 heard Laguna del monte, 2 Las Grutas

MAGELLANIC TAPACULO (*Scytalopus magellanicus*)
3 Los Glaciares N.P, 1 heard near Estancia Haberton

BLACK-CROWNED TITYRA (*Tityra inquisitor*)
2 Iguazú N.P, 2 Iguassu N.P (Brazil)

WHITE-WINGED BECARD (*Pachyramphus polychopterus*)
1 west of San Clemente. Ssp spixii

CRESTED BECARD (*Pachyramphus validus*)
1 Iguazu N.P

WHITE-BEARDED MANAKIN (*Manacus manacus*)
5 Iguazú N.P

GREENISH MANAKIN (*Schiffornis virescens*)
1 Iguazú N.P

GREY-BELLIED SHRIKE-TYRANT (*Agriornis microptera*)
A total of 10 birds Trelew-Punta Tombo, Peninsula Valdes and around San Antonio Oeste. Ssp microptera

LESSER SHRIKE-TYRANT (*Agriornis murina*)
5 Trelew Punta Tombo, 7 around San Antonio Oeste

CHOCOLATE-VENTED TYRANT (*Neoxolmis rufiventris*)
Common around Strobel Plateau foothills, 10+ Rio Gallegos-Cabo Virgenes

RUSTY-BACKED MONJITA (*Neoxolmis rubetra*)
2 Peninsula Valdes, 1 north of San Antonio Oeste

BLACK-CROWNED MONJITA (*Xolmis coronata*)
A total of 10 at Laguna del Monte and Las Grutas

WHITE MONJITA (*Xolmis irupero*)
2 Laguna del Monte, 2 Las Grutas. *Ssp irupero*

FIRE-EYED DIUCON (*Pyrope pyrope*)
5+ Lago Roca Los Glaciares N.P

DARK-FACED GROUND-TYRANT (*Muscisaxicola macloviana*)
1 Los Glaciares N.P, 5 below Martial Glacier. *Ssp mentalis*

CINNAMON-BELLIED GROUND-TYRANT (*Muscisaxicola capistrata*)
1 west of El Calafate, 2 Strobel Plateau foothills, 5 Rio Gallegos-Cabo Virgenes

WHITE-BROWED GROUND-TYRANT (*Muscisaxicola albilora*)
3 Los Glaciares N.P

OCHRE-NAPED GROUND-TYRANT (*Muscisaxicola flavinucha*)
4 Martial Glacier

SPOT-BILLED GROUND-TYRANT (*Muscisaxicola maculirostris*)
1 El Calafate-La Angostura. *Ssp maculirostris*

AUSTRAL NEGRITO (*Lessonia rufa*)
1 Trelew-Punta Tombo, common around El Calafate, Strobel Plateau foothills and Cabo Virgenes

BLACK-BACKED WATER-TYRANT (*Fluvicola albiventer*)
Several seen at Costerana Sur

WHITE-WINGED BLACK-TYRANT (*Knipolegus aterrimus*)
2 Las Grutas. *Ssp aterrimus*

HUDSON'S BLACK-TYRANT (*Knipolegus perspicillata*)
1 Laguna del Monte, 1 north of San Antonio Oeste, 1 west of Las Grutas

SPECTACLED TYRANT (*Hymenops perspicillata*)
Common around Costerana Sur, San Clemente and Atalaya. Also seen at Lago Trelew

LONG-TAILED TYRANT (*Colonia colonus*)
2 Iguazu N.P

VARIEGATED FLYCATCHER (*Empidonomus varius*)
1 Puerto Iguazu

STREAKED FLYCATCHER (*Myiodynastes maculatus*)
1 Iguazú N.P, 1 Trelew-Punta Tombo, 1 Atalaya. *Ssp solitarius*

MANY-COLOURED RUSH-TYRANT (*Tachuris rubrigastra*)
3 Costerana Sur, 2 west of San Clemente

CATTLE TYRANT (*Machetornis rixosus*)
4 Iguazu N.P, 1 Iguassu N.P (Brazil), 1 Costerana Sur

YELLOW-BROWED TYRANT (*Satrapa icterophrys*)
4 Costerana Sur, 3 Punta Rasa

GREAT KISKADEE (*Pitangus sulphuratus*)
Common in the northern part of the country (Iguazu, Buenos Aires, San Clemente), a few around Trelew and San Antonio Oeste. *Ssp argentinus*

BOAT-BILLED FLYCATCHER (*Megarhynchus pitangua*)
5 Iguazu N.P

SOCIAL FLYCATCHER (*Myiozetetes similis*)

1 Iguazú N.P

TROPICAL KINGBIRD (*Tyrannus melancholicus*)

Common in Iguazu, Buenos Aires and San Clemente. Ssp melancholicus

FORK-TAILED FLYCATCHER (*Muscivora tyrannus*)

10+ Iguazu, 5+ Costerana Sur, common around San Clemente, Atalaya, a few around San Antonio Oeste and Trelew. Ssp savana

SIRYSTES (*Sirystes sibilator*)

5 Iguazú N.P

SWAINSON'S FLYCATCHER (*Myiarchus swainsoni*)

1 Iguazú N.P

BRAN-COLORED FLYCATCHER (*Myiophobus fasciatus*)

2 Costerana Sur, 5 Atalaya. Ssp flammiceps

EARED PYGMY-TYRANT (*Myiornis auricularis*)

2 Iguazú N.P

WARBLING DORADITO (*Pseudocolopteryx flaviventris*)

3 west of San Clemente, 5 Punta Rasa

SOUTHERN BRISTLE-TYRANT (*Phylloscartes eximius*)

1 Iguazu N.P

VERMILION FLYCATCHER (*Pyrocephalus rubinus*)

10+ around San Clemente. Ssp rubinus

GREATER WAGTAIL-TYRANT (*Stigmatura budytoides*)

5 Las Grutas, 1 Laguna del Monte. Ssp flavocinerea

SOOTY TYRANNULET (*Serpophaga nigricans*)

3 west of San Clemente

WHITE-CRESTED TYRANNULET (*Serpophaga subcristata*)

10+ around San Clemente and Atalaya, 10 around San Antonio Oeste (Laguna del Monte, Las Grutas)

WHITE-BELLIED TYRANNULET (*Serpophaga munda*)

A few Costerana Sur

YELLOW-BILLED TIT-TYRANT (*Anairetes flavirostris*)

4 Las Grutas. Ssp flavirostris

TUFTED TIT-TYRANT (*Anairetes parulus*)

1 Atalaya, 2 Peninsula Valdes, 8 around San Antonio Oeste, 1 Tierra del Fuego N.P. Ssp parulus

YELLOW-BELLIED ELAENIA (*Elaenia flavogaster*)

3 Iguazú N.P

WHITE-CRESTED ELAENIA (*Elaenia albiceps*)

Common Los Glaciares N.P, 1 Strobel Plateau, common Tierra del Fuego. Ssp chilensis

SMALL-BILLED ELAENIA (*Elaenia parvirostris*)

1 Costerana Sur, 5 around San Clemente, 2 Atalaya

LARGE ELAENIA (*Elaenia spectabilis*)

1 Puerto Iguazu

SEPIA-CAPPED FLYCATCHER (*Leptopogon amaurocephalus*)

1 Iguazú N.P

RUFOUS-TAILED PLANTCUTTER (*Phytotoma rara*)

8 Los Glaciares N.P

WHITE-TIPPED PLANTCUTTER (*Phytotoma rutila*)

4 Laguna del Monte

BARN SWALLOW (*Hirundo rustica*)

50+ Lago Trelew. Ssp erythrogaster

SOUTHERN MARTIN (*Progne modesta*)

1 Costerana Sur, 2 west of San Clemente, 10 Trelew-Punta Tombo, common Peninsula Valdes and around San Antonio Oeste

GREY-BREASTED MARTIN (*Progne chalybea*)

Common around Iguazu, Buenos Aires, San Clemente and Atalaya. Ssp macrorhamphus

BROWN-CHESTED MARTIN (*Phaeoprogne tapera*)

10+ around San Clemente, 5 Costerana Sur

WHITE-RUMPED SWALLOW (*Tachycineta leucorrhoa*)

5 Iguazu N.P, common around Buenos Aires, San Clemente and Atalaya

CHILEAN SWALLOW (*Tachycineta leucophyga*)

Common in the southern part of the country

WHITE-WINGED SWALLOW (*Tachycineta albiventer*)

3 Iguazu N.P, 1 Iguassu N.P (Brazil)

BLUE-AND-WHITE SWALLOW (*Notiochelidon cyanoleuca*)

Common apart from the Pampas area (Buenos Aires - San Clemente) and Tierra del Fuego. Ssp patagonica

SOUTHERN ROUGH-WINGED SWALLOW (*Stelgidopteryx ruficollis*)

4 Iguazu N.P

PLUSH-CRESTED JAY (*Cyanocorax chrysops*)

14 Iguazú N.P, 2 Costerana Sur (escapes)

GRASS WREN (*Cistothorus platensis*).

5+ near Estancia Moat, Tierra del Fuego. Ssp hornensis

SOUTHERN HOUSE WREN (*Troglodytes musculus*)

Fairly common in most areas except Peninsula Valdes and Strobel Plateau. Ssp bonairiae in the north and chilensis in the south.

WHITE-BANDED MOCKINGBIRD (*Mimus triurus*)

1 west of San Clemente, 10+ around San Antonio Oeste (Laguna del Monte and Las Grutas)

CHALK-BROWED MOCKINGBIRD (*Mimus saturninus*)

A few seen in Iguazu and fairly common around Buenos Aires and San Clemente. Ssp modulator

PATAGONIAN MOCKINGBIRD (*Mimus patagonicus*)

Common around Trelew, Punta Tombo, Peninsula Valdes, San Antonio Oeste and El Calafate

EASTERN SLATY-THRUSH (*Turdus subalaris*)

2 Iguazu N.P

CREAMY-BELLIED THRUSH (*Turdus amaurochalinus*)

2 Costerana Sur, 1 Atalaya

PALE-BREASTED THRUSH (*Turdus leucomelas*)

A few seen in Iguazu N.P

RUFOUS-BELLIED THRUSH (*Turdus rufiventris*)

5 Iguazu N.P, 10+ around San Clemente, 5 Atalaya, common at Costerana Sur. Ssp rufiventris

AUSTRAL THRUSH (*Turdus falcklandii*)

1 Las Grutas, common in Los Glaciares N.P, Cabo Virgenes, common Tierra del Fuego. Ssp pembertoni in the north and ssp magellanicus in the south.

SHORT-BILLED PIPIT (*Anthus furcatus*)

10+ Peninsula Valdes, 2 Laguna del Monte. Ssp furcatus

CORRENDERA PIPIT (*Anthus correndera*)

5 west of San Clemente, 10 around El Calafate, 2 towards Cabo Virgenes. Ssp correndera in the north and ssp chilensis in the south.

HELLMAYR'S PIPIT (*Anthus hellmayri*)

2 Punta Rasa, 3 Lago Trelew

MASKED GNATCATCHER (*Polioptila dumicola*)

10+ Costerana Sur, 5 around San Clemente, 1 Atalaya. Ssp dumicola

RED-EYED VIREO (*Vireo olivaceus*)

5 Iguazu N.P, 1 Atalaya. Ssp diversus

HOUSE SPARROW (*Passer domesticus*)

INTRODUCED

Common in most urban areas

GOLDEN-CROWNED WARBLER (*Basileuterus culicivorus*)

5 Iguazú N.P

WHITE-BROWED WARBLER (*Basileuterus leucoblepharus*)

1 Iguazú N.P

TROPICAL PARULA (*Parula pitiayumi*)

3 Iguazu N.P, 1 west of San Clemente, 1 Punta Rasa

MASKED YELLOWTHROAT (*Geothlypis aequinoctialis*)

15+ Costerana Sur, 2 Atalaya

BANANAQUIT (*Coereba flaveola*)

1 Puerto Iguazu

CHESTNUT-VENTED CONEBILL (*Conirostrum speciosum*)

1 Iguazú N.P, 1 Puerto Iguazu

BLUE DACNIS (*Dacnis cayana*)

1 Puerto Iguazu, 5 Iguazú N.P

SWALLOW TANAGER (*Tersina viridis*).

4 Iguazú N.P

PURPLE-THROATED EUPHONIA (*Euphonia chlorotica*)

6 Puerto Iguazu, 6 Iguazú N.P

VIOLACEOUS EUPHONIA (*Euphonia violacea*)

3 Iguazú N.P

CHESTNUT-BELLIED EUPHONIA (*Euphonia pectoralis*)

2 Puerto Iguazu, 6 Iguazu N.P

BLUE-NAPED CHLOROPHONIA (*Chlorophonia cyanea*)

1 Iguazú N.P

GUIRA TANAGER (*Hemithraupis guira*)

3 Iguazu N.P

GREEN-HEADED TANAGER (*Tangara seledon*)

4 Puerto Iguazu, 4 Iguazu N.P

MAGPIE TANAGER (*Cissopis leveriana*)

6 Iguazú N.P, 2 Iguassu N.P (Brazil)

BLACK-GOGGLED TANAGER (*Trichothraupis melanops*)

6 Iguazú N.P

HOODED TANAGER (*Nemosia pileata*)

2 Puerto Iguazu

WHITE-LINED TANAGER (*Tachyphonus rufus*)

2 Iguazu N.P

RUBY-CROWNED TANAGER (*Tachyphonus coronatus*)

5 Iguazú N.P

SAYACA TANAGER (*Thraupis sayaca*)

5+ Puerto Iguazu, 5+ Iguazú N.P, 2 Iguassu N.P (Brazil)

RED-CROWNED ANT-TANAGER (*Habia rubica*)

6 Iguazú N.P

HEPATIC TANAGER (*Piranga flava*)

1 Punta Rasa

BLUE-AND-YELLOW TANAGER (*Thraupis bonariensis*)

1 Punta Rasa, 2 Las Grutas

GOLDEN-BILLED SALTATOR (*Saltator aurantirostris*)

10+ around San Antonio (Las Grutas and Laguna del Monte). Ssp parkesi or nasica

GREYISH SALTATOR (*Saltator coerulescens*)

1 Punta Rasa

BLACK-THROATED GROSBEAK (*Pitylus fuliginosus*)

1 Iguazu N.P

YELLOW CARDINAL (*Gubernatrix cristata*)

2 Laguna del Monte

YELLOW-BILLED CARDINAL (*Paroaria capitata*)

1 Costerana Sur (MB, SN)

RED-CRESTED CARDINAL (*Paroaria coronata*)

5+ Costerana Sur

CHESTNUT- BELLIED SEED-FINCH (*Oryziborus angolensis*)

2 Iguazu N.P

DOUBLE-COLLARED SEEDEATER (*Sporophila caerulescens*)

5 Iguazu N.P, 10+ Costerana Sur, 3 west of San Clemente. Ssp caerulescens

BLACK-THROATED FINCH (*Melanodera melanodera*)

5+ Rio Gallegos-Cabo Virgenes

YELLOW-BRIDLED FINCH (*Melanodera xanthogramma*)

4 below Martial Glacier

COMMON DIUCA-FINCH (*Diuca diuca*)

Common Trelew-Punta Tombo, Peninsula Valdes, around San Antonio Oeste, 1 near La Angostura. Ssp minor

GRASSLAND YELLOW-FINCH (*Sicalis luteola*)

Common around San Clemente and San Antonio Oeste. Ssp luteiventris

SAFFRON FINCH (*Sicalis flaveola*)

3 Puerto Iguazu, 8 Iguazu N.P, 2 Iguassu N.P (Brazil), 2 Costerana Sur, 2 San Clemente

PATAGONIAN YELLOW-FINCH (*Sicalis lebruni*)

2 Punta Tombo, 2 Peninsula Valdés, 20+ around Strobel Plateau foothills, 5 Cabo Virgenes

GREY-HOODED SIERRA-FINCH (*Phrygilus gayi*)

4 Punta Tombo, 5 El Calafate, 10+ Cabo Virgenes. This species is found in the dry steppe contra Patagonian S-F that is found in more humid forest. Ssp caniceps.

PATAGONIAN SIERRA-FINCH (*Phrygilus patagonicus*)

Common in Los Glaciares N.P and Tierra del Fuego N.P

MOURNING SIERRA-FINCH (*Phrygilus fruticeti*)

Common around Trelew, Punta Tombo, Peninsula Valdes, San Antonio Oeste and Strobel Plateau foothills. Ssp ultimus

CARBONATED SIERRA-FINCH (*Phrygilus carbonarius*)

20+ Peninsula Valdes, 10 Laguna del Monte

RED-CRESTED FINCH (*Coryphospingus cucullatus*)

4 Iguazú N.P

RUFOUS-COLLARED SPARROW (*Zonotrichia capensis*)

This adaptive species was seen almost everywhere. Probably several subspecies involved.

LONG-TAILED REED-FINCH (*Donacospiza albifrons*)

2 Costenera Sur, 2 west of San Clemente, 4 Punta Rasa

BLACK-AND-RUFOUS WARBLING-FINCH (*Poospiza nigrorufa*)

Common Costerana Sur, 5 west of San Clemente

RINGED WARBLING-FINCH (*Poospiza torquata*)

3 Laguna del Monte, 1 Las Grutas. Ssp pectoralis

BLACK-CAPPED WARBLING-FINCH (*Poospiza melanoleuca*)

5+ Costerana Sur

GREAT PAMPA-FINCH (*Embemagra platensis*)

20+ west of San Clemente, 20+, 5 Costerana Sur. Ssp platensis

HOODED SISKIN (*Carduelis magellanica*)
Common Costerana Sur, 20 around San Clemente

BLACK-CHINNED SISKIN (*Carduelis barbata*)
4 Punta Tombo, 4 near San Antonio Oeste, common Los Glaciares N.P and Tierra del Fuego

EUROPEAN STARLING (*Sturnus vulgaris*) *INTRODUCED*
A few in Buenos Aires and at Costerana Sur

RED-RUMPED CACIQUE (*Cacicus haemorrhous*)
Common Iguazú N.P

GIANT COWBIRD (*Scaphidura oryzivora*)
A few in Iguazú N.P

AUSTRAL BLACKBIRD (*Curaeus curaeus*)
10+ Los Glaciares N.P, 2 Tierra del Fuego. Ssp curaeus

EPAULET ORIOLE (*Icterus cayanensis*)
2 Costerana Sur

SCREAMING COWBIRD (*Molothrus rufoaxillaris*)
1 Costerana Sur

SHINY COWBIRD (*Molothrus bonariensis*)
Common apart from the southern part of the country. Ssp bonariensis

BAY-WINGED COWBIRD (*Molothrus badius*)
A few in Costerana Sur, San Clemente and Atalaya. Ssp badius

YELLOW-WINGED BLACKBIRD (*Agelaius thilius*)
Common in Costerana Sur around San Clemente, Atalaya, San Antonio Oeste and at La Angostura. Ssp petersii in the north and ssp thilius in the south

BROWN-AND-YELLOW MARSHBIRD (*Pseudoleistes virescens*)
Common around San Clemente

SCARLET-HEADED BLACKBIRD (*Amblyramphus holosericeus*)
3 Costerana Sur (MB, SN), 2 west of San Clemente

LONG-TAILED MEADOWLARK (*Sturnella loyca*)
Common towards Punta Tombo, Peninsula Valdes, around San Antonio Oeste, 5 El Calafate, 10 Cabo Virgenes. Ssp loyca

WHITE-BROWED BLACKBIRD (*Sturnella superciliaris*)
10 Costerana Sur (MB, SN)



Ruddy-headed Goose, Cabo Virgenes